

COMPANY PROFILE

Zhejiang iMotorLinx Technology Co., Ltd. is a digital service company under Wolong Electric Group Co., Ltd. It aims to establish the iMotorLinx industrial Internet platform, targeting the entire upstream, midstream, and downstream sectors of the global electric drive industry. The company provides equipment full-life cycle services and centralized sourcing services for supply chains. With the mission of 'Empowering the Industry, Driving the Future,' it ensures the safe and healthy operation of industrial equipment while contributing to the development of a world-class platform for the motor and drive control industry, aspiring to become a leader in the industrial Internet sector.



- Proficient in the genes of industrial manufacturing
- Only platform in the field of electric drive
- Mastering key core technologies
- Employing global service capabilities
- Leading business model innovation
- Professional explosion-proof service brand

SERVICE NETWORK

Utilize global factories and nearby service stations to provide professional services to customers



China

14 Service Center

108 Digital experts

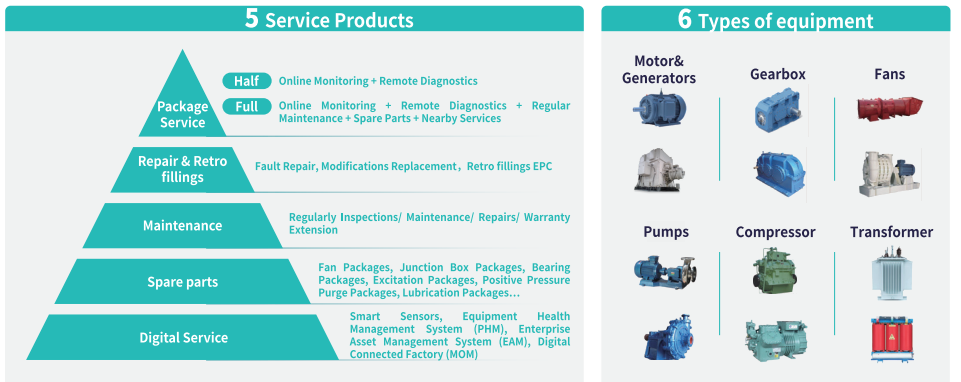
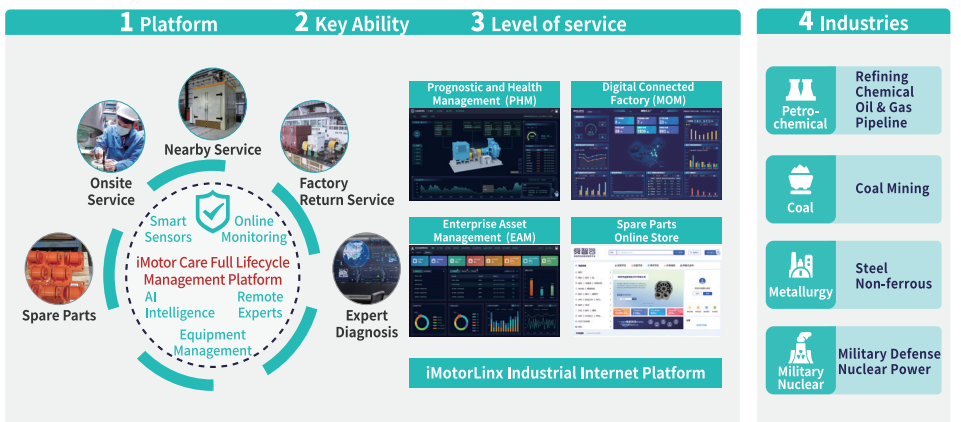
158 Electric drive experts

300 Service engineers

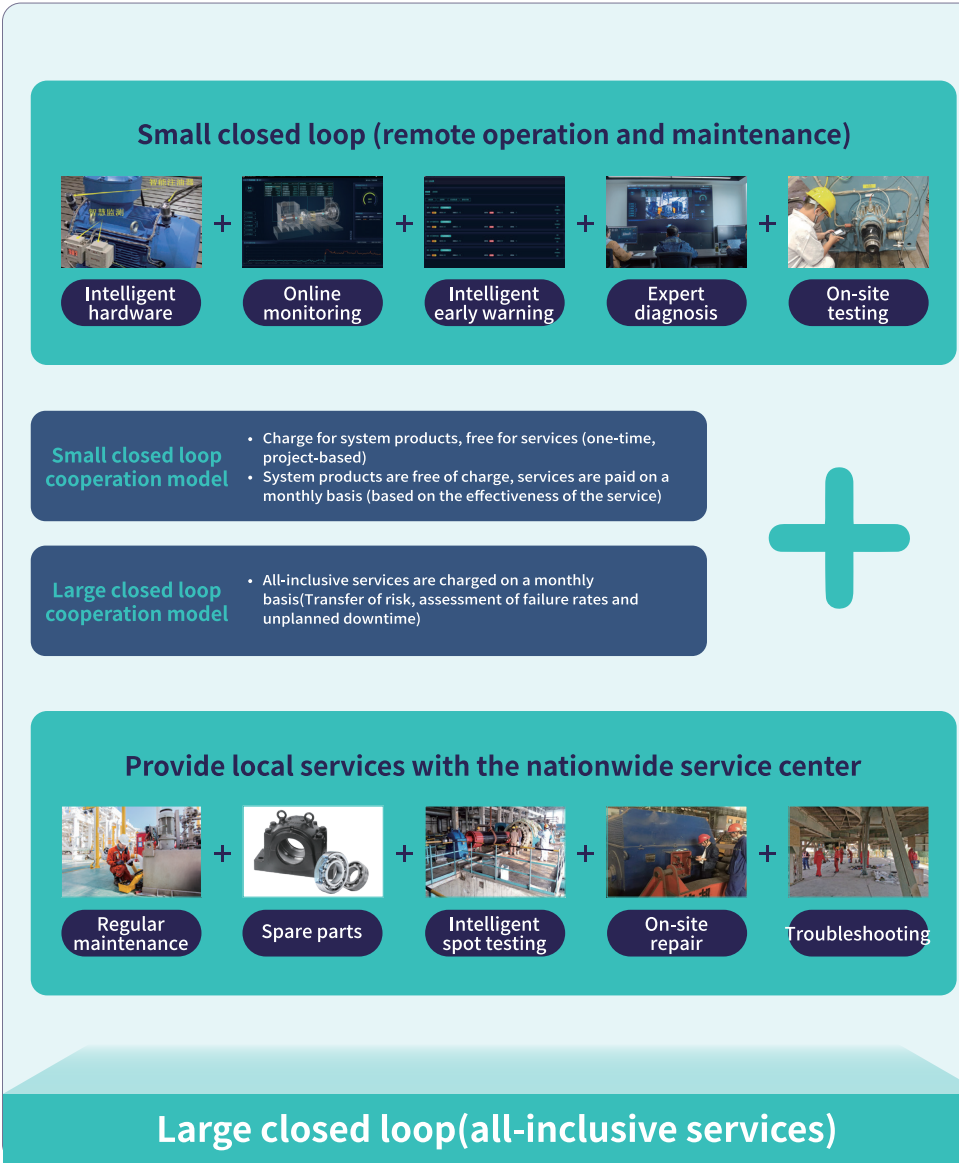
50+ years of experience in testing and maintenance of electric drive equipment

CORE SOLUTIONS

Based on the iMotor Care equipment full-life cycle management platform; utilize spare parts and expert diagnosis as **two major tools**; establish a **three-tiered service system** consisting of on-site service, nearby service, and return-to-factory service; targeting the **four major industries** of petrochemicals, metallurgy, coal, and military nuclear, it provides **five service product series** including equipment full-life cycle management platform, spare parts, regular maintenance/overhaul, major overhaul and reconstruction, and full-package services; focusing on **six types of equipment** including motors, gearboxes, fans, pumps, compressors, transformers, etc., to safeguard the healthy and safe operation of industrial equipment.



Solution features: online and offline one-stop service, connecting the last mile of service



SIX SPARE PARTS PACKAGES

Fan package

BOM composition
Motor outer fan + windshield + retaining ring + windshield assembly bolts

Applicable products
IC411 self-fan-cooling type motor

Product characteristics
It can be replaced with new plastic fan, or upgraded to aluminum fan, cast iron fan (surface insulation resistance not greater than the 9th power of 10). Replace periodically to ensure proper motor operation.

Value highlights
Original parts with reliable quality; Meet the requirements of protection grade, impact test, gap, insulation resistance, and thermal stability. Upgraded to aluminum or cast iron fans for long life cycle operation.

Applicable scope
Enterprises in the petrochemical and chemical industries that have reliable requirements for motor operation and standardized motor maintenance management.

Excitation package

BOM composition
The excitation package is designed according to QFW-30-2 and below models, while QFW-30-2 and above models are designed separately according to the project (including complete machine + diode + magnet)

Applicable products
QFW generators and synchronous motors

Product characteristics
Regularly replace aged components (diodes, magnets, with a normal lifespan of 10 years); Regular maintenance and replacement of excitation motor.

Value highlights
Original parts with reliable quality (with a lifespan of 20 years, maintenance can be strengthened during use; diode lifespan of 10 years, magnet lifespan of 10 years, can be replaced normally).

Applicable scope
Steel, petrochemical, chemical and other waste heat TRT power generation projects, enterprises using steam turbine generators, or enterprises requiring excitation device modification (brushed to brushless).

Junction box package

BOM composition
Main and auxiliary terminal boxes for the motor (including terminal covers, terminal bolts, sealing rings, and standard parts)

Applicable products
YB, Y series and other types of motors

Product characteristics
Non-standard parts (wiring bolts) are provided in a timely manner; Upgraded large cavity junction boxes are available; Temperature and humidity sensors are displayed directly. Diversified output methods are available for selection (such as gland, adhesive sealing, armor, steel pipe wiring, etc.)

Value highlights
Original parts with reliable quality; Integral junction box with separate explosion-proof certifications. Stocking system with timely delivery; Upgraded large cavity for use-friendly installation and wiring. The digital display of temperature and humidity shows the situation at a glance.

Applicable scope
Petrochemical and chemical industries, enterprises using electric motors in humid tropical regions (south, near the sea)

Positive pressure purge package

BOM composition
Purging unit (with battery + filter + pneumatic parts + valve) + pressure relief unit + connection line

Applicable products
YZ/YK, YZ/KS, TZ series motors and other types of positive pressure explosion-proof motors

Product characteristics
Regularly replace aged components (diodes, magnets, with a normal lifespan of 10 years); Regular maintenance and replacement of excitation motor.

Value highlights
Original parts with reliable quality (battery life of 4 years, filter life of 6 years, regular normal replacement); Whole machine upgrade, fine craftsmanship, third-party certification.

Applicable scope
Enterprises in the petrochemical, chemical, and coal processing industries that use positive pressure blowing motors or require 'positive pressure blowing motor transformation'.

Lubrication package

BOM composition
Lubricating grease + grease injector + digital intelligent lubrication

Applicable products
Rolling bearing motor using lubricating grease

Product characteristics
Special lubricating grease for motor, with low noise and long life. Regularly add grease and lubricate accurately.

Value highlights
Special lubricating grease for motors, with lower noise and longer lifespan; Regular and precise lubrication to reduce costs and maintain cleanliness.

Applicable scope
Steel, coal, petroleum, chemical and other fields

Bearing assembly package

BOM composition
Bearing outer cover + end cover + bearing; inner cover + bearing + lubricating oil + V-ring + water dumping ring + oil dumping ring + fasteners of each part (can be sold in combination)

Applicable products
Rolling bearing motor

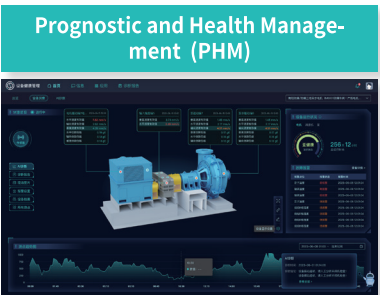
Product characteristics
Regularly replace aged parts (rubber products, with a normal lifespan of 4-6 years); Non-standard parts (end caps, inner and outer covers, water aligners, oil aligners) should be stocked in a timely manner; Explosion-proof safety can be guaranteed for explosion-proof motors.

Value highlights
The processed metal parts are made of high-quality HT250 oil of which have undergone "special aging" treatment, and the original spare parts ensure the explosion-proof performance of the motor.

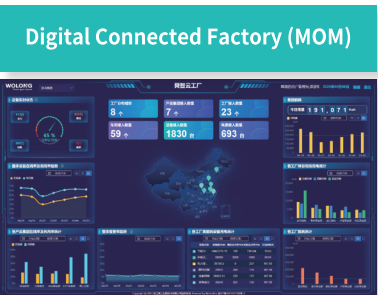
Applicable scope
Motors for high-end customers in the petrochemical and chemical industries, as well as for critical applications.

PRODUCTS & SERVICES

The Motor Care Equipment Full-lifecycle Management Platform, centered on predictive maintenance, enables intelligent management of various moving equipment. The self-developed series of multi-field intelligent sensors, multi-channel and multi-functional data collection stations, and other intelligent hardware products are equipped with core application products such as the Equipment Prognostics and Health Management System(PHM), Enterprise Asset Management system (EAM), and Digital Connected Plant (MOM) and One-Stop Purchasing Cloud Mall for Industrial Products (iSCC).



To ensure industrial equipment' s working of Healthy, Safety and Stability



To support digitized transformation and smart factory constructions



To enable manufacturing asset and facilities 'management and operational efficiency improvement



Super quality and competitive price, Electric Drive Industrial Parts & Materials E-procurement store

OVERHAUL AND RECONSTRUCTION

Restorative maintenance

| BUSINESS TYPE | BUSINESS PRODUCT | MOTOR | GENERATOR | SYNCHRONOUS MOTOR | FAN | STEAM TURBINE | CONTROLLER |
|-------------------------|------------------|-------|-----------|-------------------|-----|---------------|------------|
| Restorative maintenance | Minor repair | ✓ | ✓ | ✓ | ✓ | ✓ | ✓ |
| | Medium repair | ✓ | ✓ | ✓ | ✓ | ✓ | |
| | Major repair | ✓ | ✓ | ✓ | ✓ | | |

MINOR REPAIR

Usually only parts that are subject to rapid wear and have a service life equal to or less than the repair interval need to be repaired or replaced.

MEDIUM REPAIR

Partial dismantling, repairing or replacing some of the main parts and reference parts of the equipment, or repairing parts whose service life is equal to or less than the repair interval.

MAJOR REPAIR

With the goal of fully restoring the operating capability of the equipment, dismantle all or most of the components of the equipment, repair and replace unqualified parts and accessories, renovate the appearance, and restore the specified accuracy, performance, and production efficiency of the equipment.

Modification maintenance

Capacity and voltage adjustments

Energy-saving modification

Slide bearing oil leakage control

Change polarity and frequency

Protection grade modification

Temperature rise control

MAJOR CUSTOMERS










































https://www.imotorlinx.com



shunyun@imotorlinx.com




Building 16, Zhejiang University Network Technology City, 1100 Fuxing East Road, Shangyu District, Shaoxing City


18th Floor, Building 2, Shihua Dibao Building, Liyi Road, Xiaoshan District, Hangzhou City

No. 1801 Dushan Avenue, Nanyang City


1st Floor, Building 2, No. 339 Cangjing Road, Jiuting Town, Songjiang District, Shanghai



400-888-2069



OFFICIAL OFFICIAL ACCOUNT



OFFICIAL VIDEO ACCOUNT

iMotor Care Full-Lifecycle Services

Safe and reliable, efficient and worry-free, providing one-stop services for online monitoring, expert diagnosis, spare parts, maintenance and repair, overhauls and reconstruction, and system modifications.

