

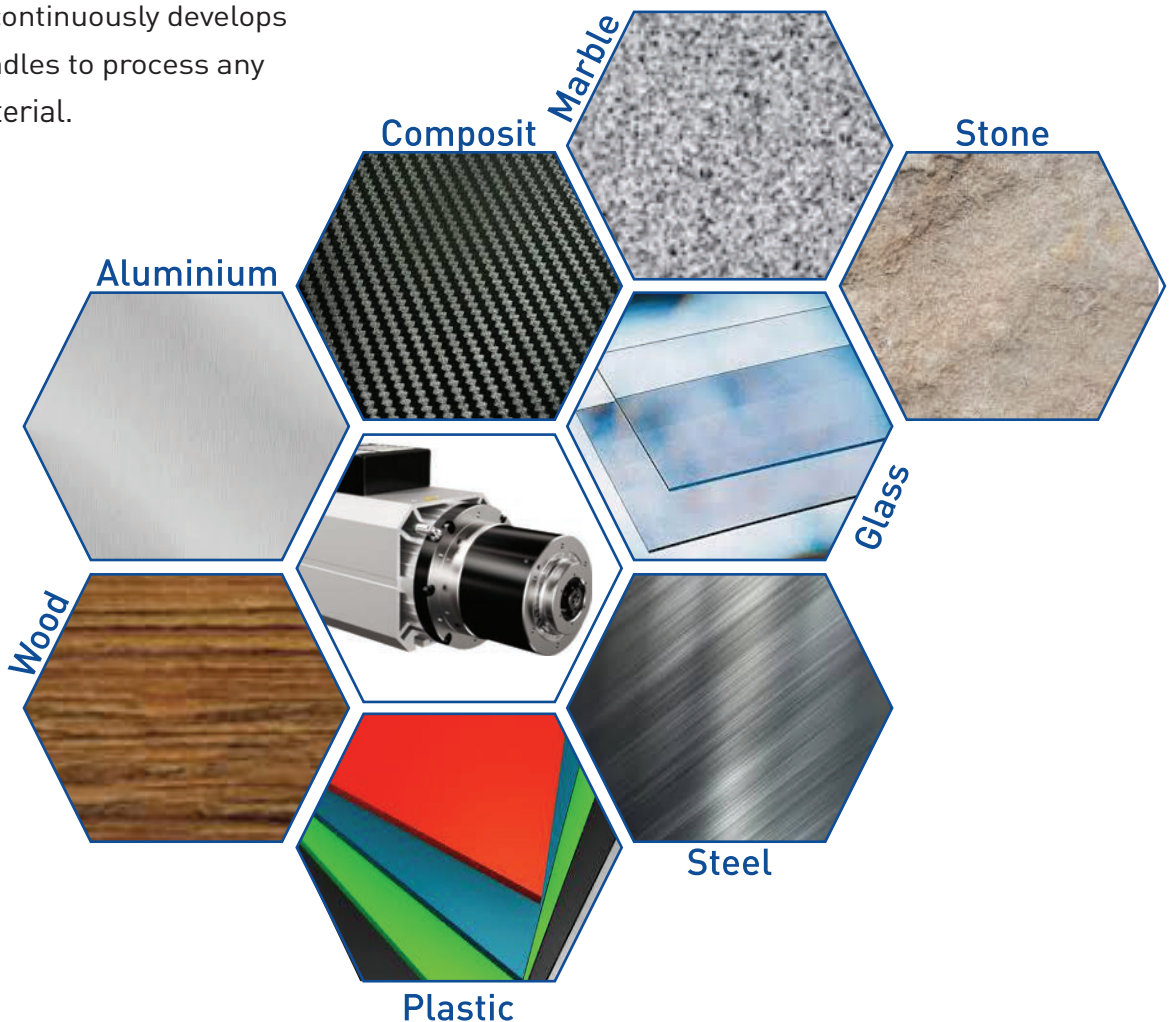
Electrospindles Automatic tool change ATC

OLIspeed began from the resourcefulness of people with recognized technical, productive and commercial experience in the machine tool sector and Hi-Tech components necessary to guarantee or improve the machines performance. In addition it was the desire of the OLI group to expand its business in the industrial field.

OLIspeed is an independent company and is not a manufacturer of CNC machines nor directly or indirectly involved with any organization, corporation or group. OLIspeed's core business is to develop, produce, and market electro-spindles, milling heads and accessories suitable for machine tools. Used for processing various materials from all types of wood to aluminium, to plastic to glass, to marble and steel.

OLIspeed, is part of the OLI group, a world leader in its sector and takes advantage of mass production of mechanical and electromechanical components, and its worldwide distribution network.

OLIspeed continuously develops electrospindles to process any type of material.



WHEN YOU NEED IT, WHERE YOU NEED IT

OLIspeed uses the OLI sales network consisting of 18 branches distributed around the world, to support our customers with pre and after sales service. Standard products are available upon request from our warehouses.

“When you need it, where you need it.”

OLI Australia

OLI Benelux

OLI Brasil

OLI China

OLI France

OLI Germany

OLI India

OLI Italy

OLI Malta

OLI Middle East

OLI Nordic

OLI Russia

OLI South Africa

OLI Spain

OLI Thailand

OLI Turkey

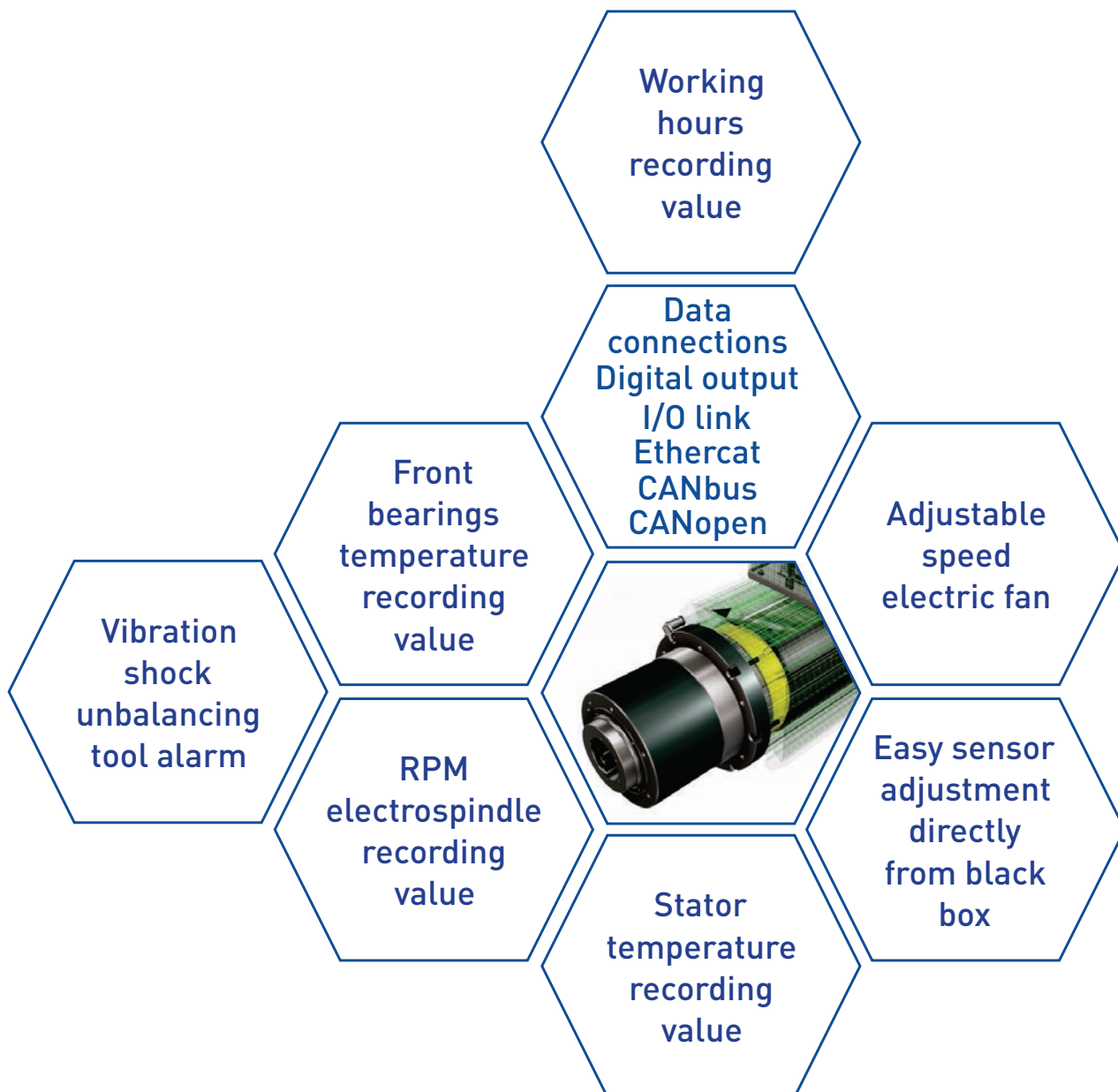
OLI UK

OLI USA



Excellent customer service is one of OLIspeed's primary objectives which it guarantees through its vast worldwide distribution network of solely owned branches.



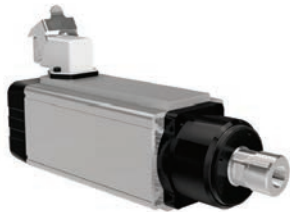


EXCLUSIVE CERTIFICATION

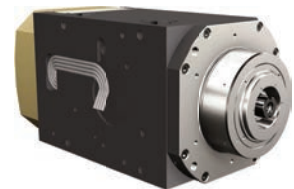
Electric motor with insulation system US certified



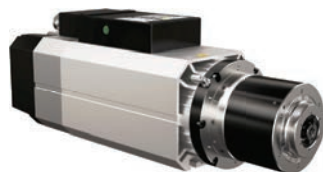
RANGE OF ELECTROSPINDLES WITH UL CERTIFICATION



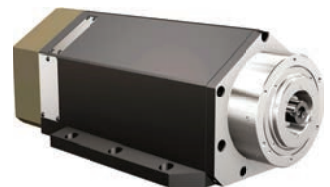
SME 070-103
From 0.8 kW to 6 kW



SAB150
From 7 Kw to 24 kW



SAE 103/SAE 145
From 3.5 kW to 16 Kw



SAB 132
From 11.5 kW to 16 kW



Electrospindle
Manual tool change MTC
From 0,6 to 1 kW



Electrospindle Extrudeed series
Automatic tool change ATC
From 3,5 to 16 kW



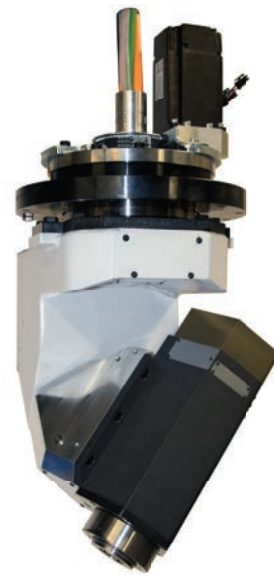
Electrospindle Block series
Automatic tool change ATC
From 7 to 24 kW



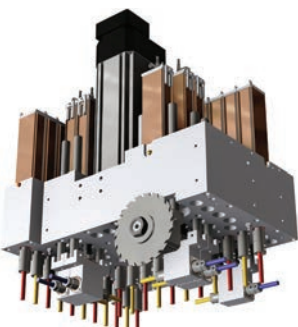
Milling heads
Single shoulder 90°
From 10 to 15 kW



Milling heads
Double shoulder
From 15 to 24 kW



Milling heads
Single shoulder 50°
From 11,5 to 16 kW



Boring Unit
Vertical, Horizontal,
blade and accessory



Heat exchanger
150-300 W/°C



Refrigerator/ Chiller
1,6-4,2 kW



Accessory



AUTOMATIC TOOL CHANGE

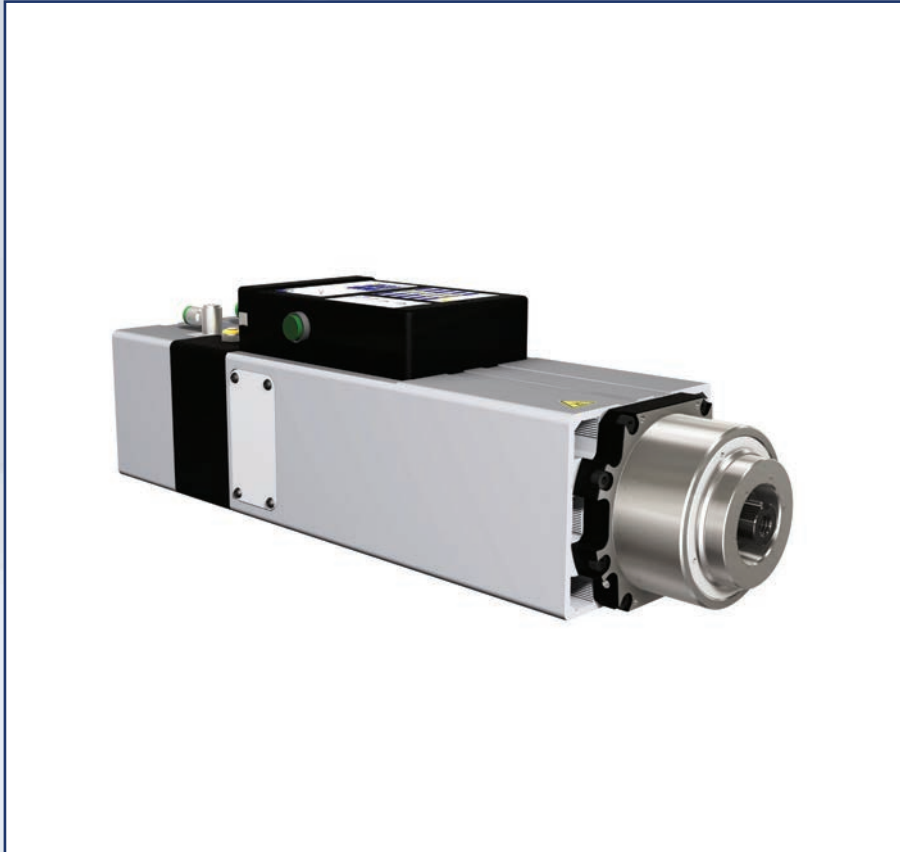
Main features

- FEM designed aluminium frame;
- Extruded body with high thermal stability;
- High efficiency electric motors;
- Heavy duty versions available;
- Encoder for vector control available (Optional);
- Front labyrinth;
- Automatic tool change piston return operated by springs (standard);
- Additional pneumatic service for "air piston return". (standard)

Technical data

- Rotational speed up to 24,000 rpm;
- Ceramic front and rear bearings.



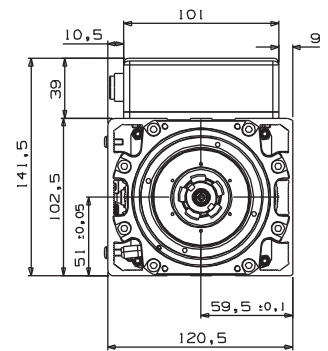
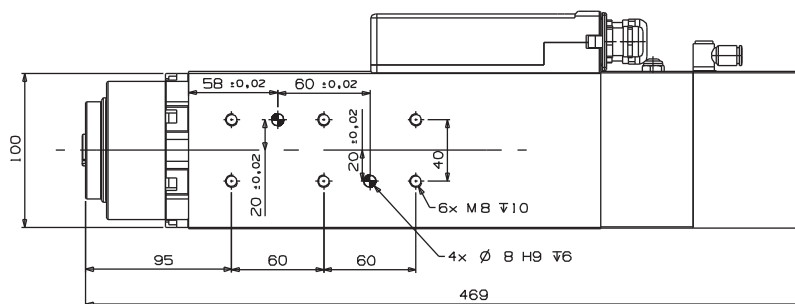
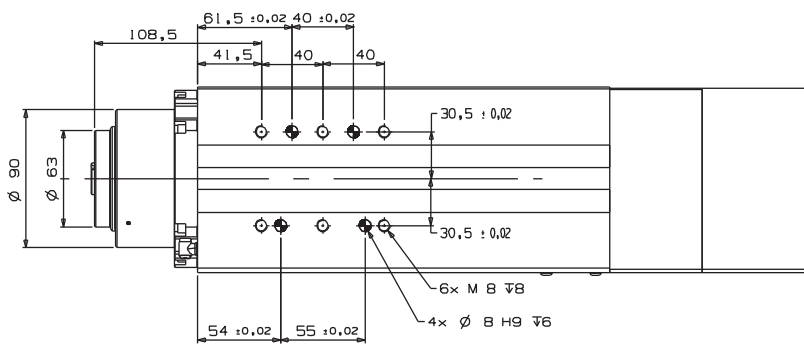


Applications

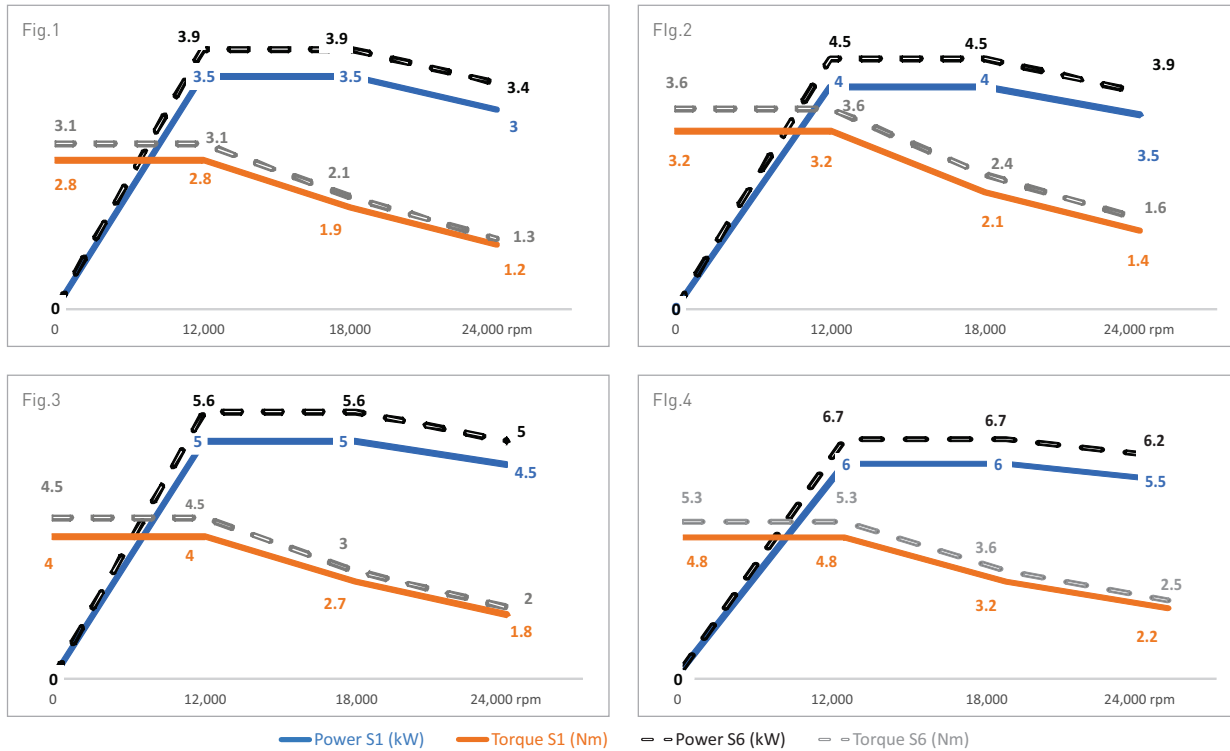
Automatic tool change electrospindle projected to work wood, aluminium and plastic materials. Well protected to work in environments with wood dust, aluminium, and plastic chippings.

Suitable for light-medium milling operations. Available in many combinations of power and torque to satisfy any customers requirements. Fan cooled with very low noise level. Available in ISO 30 and HSK F63 tool taper.

Dimensions



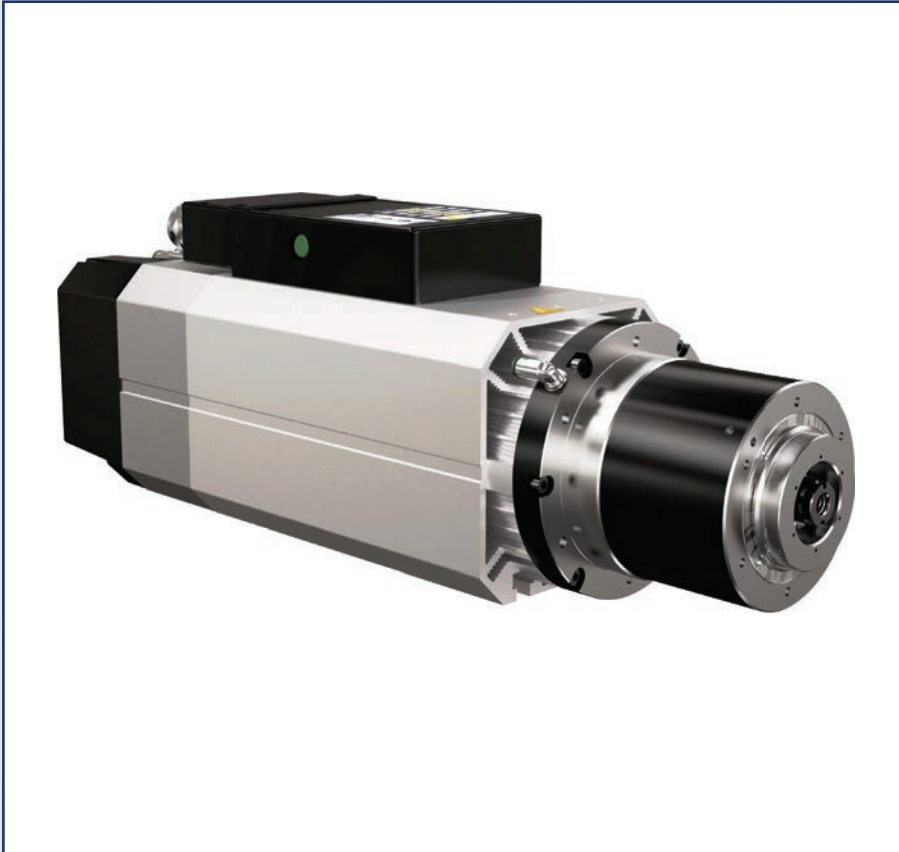
Power and torque



Main characteristics

SAE103 - automatic tool change

Main housing type/dimensions	Extruded/mm	103 x 120
Power S1/Rated speed	kW /rpm*1000	3.5/12 fig. 1
		4.0/12 fig. 2
		5.0/12 fig. 3
		6.0/12 fig. 4
Torque S1	Nm	See Chart
Tool taper	-	ISO 30
		HSK F63
Nose type	-	short nose - SN
Maximum frequency	Hz	800
Nominal tension	V	220/380
Numbers of poles	N°	4
Maximum speed	rpm	24000
Tool Clamping	-	springs
Tool Unlocking	Pneumatic actuator/bar	4 (min.)
Cylinder return	-	springs
Front Bearings/Max speed	Ceramic	24000
		18000
Rear Bearings/Max speed	Ceramic	24000
		18000
Bearings lubrication	-	for life
Cooling system	Type/V	Electric fan/24
Electric board 4.0	-	-
Weight	kg	18.0

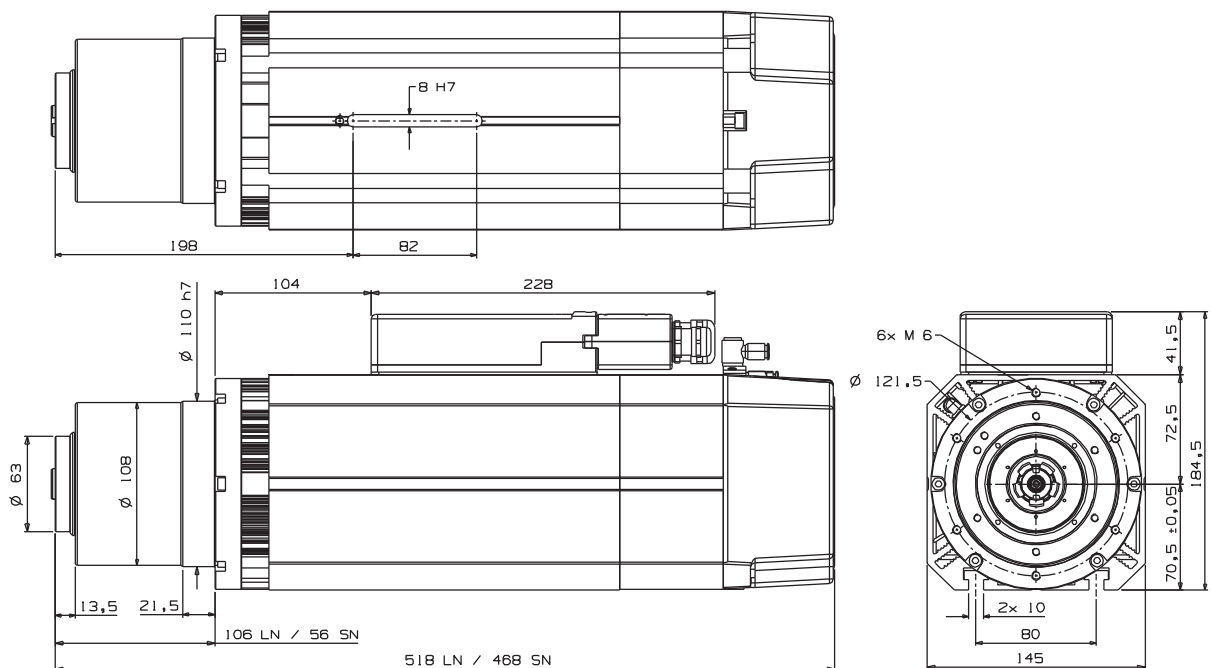


Applications

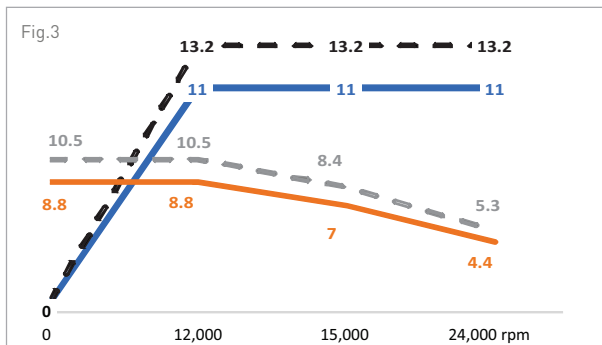
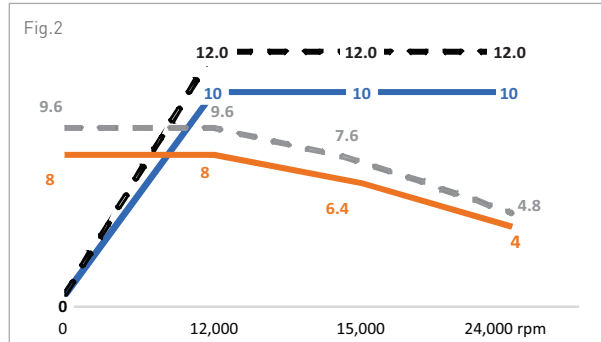
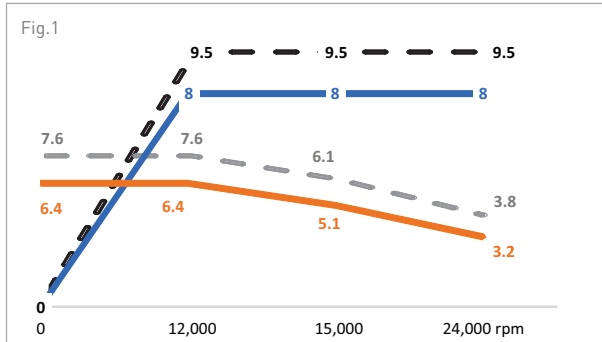
Electrospindle projected for milling and drilling wood, plastic, and composite materials. Available in many combinations of power and torque to satisfy any customers requirements. Quick and easy maintenance, thanks to a "shaft kit".

Available in ISO30 and HSK F63 configuration, short and long nose. C axis available for all configuration (see details on pag. 20.)

Dimensions



Power and torque



Power S1 (kW) Torque S1 (Nm) - - Power S6 (kW) - - Torque S6 (Nm)

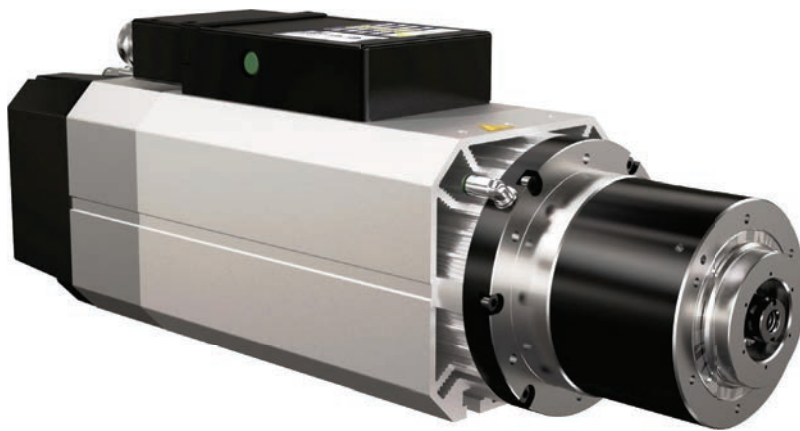
Main characteristics

SAE145 - automatic tool change air cooling		
Main housing type/dimensions	Extruded/mm	145 x 145
Power S1/Speed	kW/rpm*1000	8.0/12 fig. 1
		10.0/12 fig. 2
		11.0/12 fig. 3
Torque S1	Nm	See Chart
Tool taper	-	ISO 30
Nose	-	short nose - SN long nose - LN
Maximum frequency	Hz	800
Nominal tension	V	220/380
Numbers of poles	N°	4
Maximum speed	rpm	24000
Tool Clamping	-	springs
Tool Unlocking	Pneumatic actuator/bar	3 (min.)
Cylinder return ¹	-	springs
Front Bearings/Max speed	Ceramic	24000
Rear Bearings/Max speed	Steel	18000
	Ceramic	24000
Bearings lubrication	-	for life
Cooling system	Type/V	Electric fan/24
Electric board 4.0	Standard	digital
	Protocols available	can bus - can open - ethercat - I/O link
Weight	kg	28.0

Options available	*
Speed monitoring	✓
C axis	✓
C axis with pneumatic service	✓
Aggregate reference sleeve	✓
Encoder 1Vpp	✓
Encoder TTL	✓
Vibration sensor	✓
Bearing temperature sensor	✓
* ✓ available, - not available	

Note
¹ Available, as standard, additional pneumatic service for cylinder air return

Heavy duty

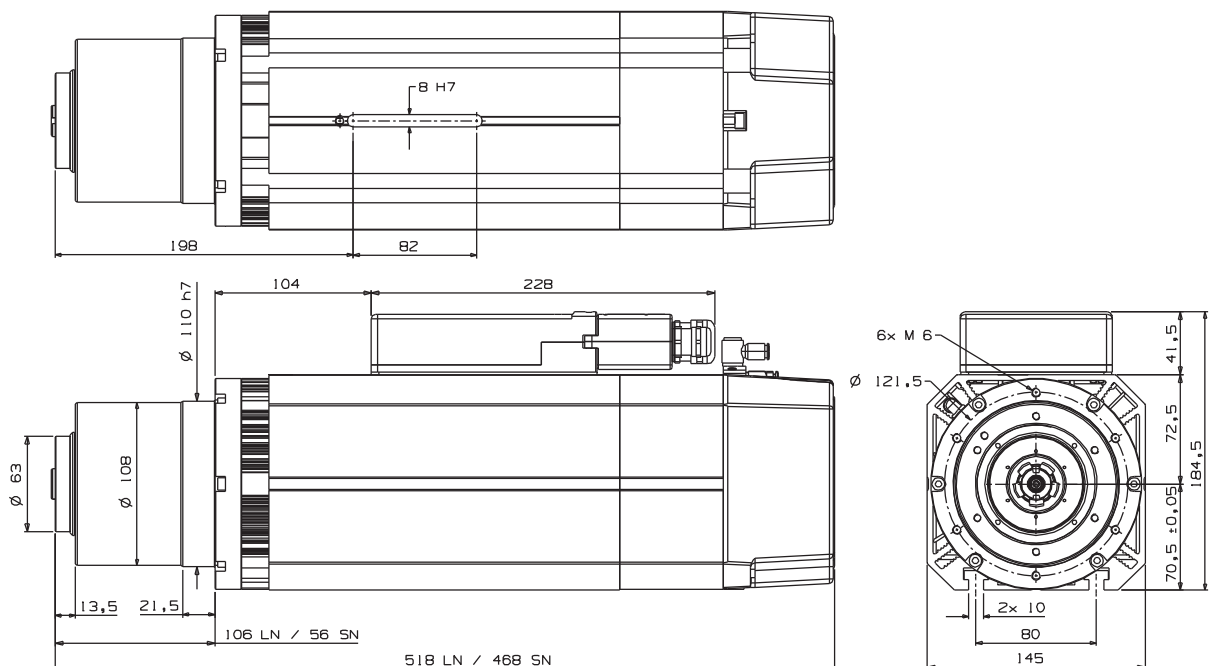


Applications

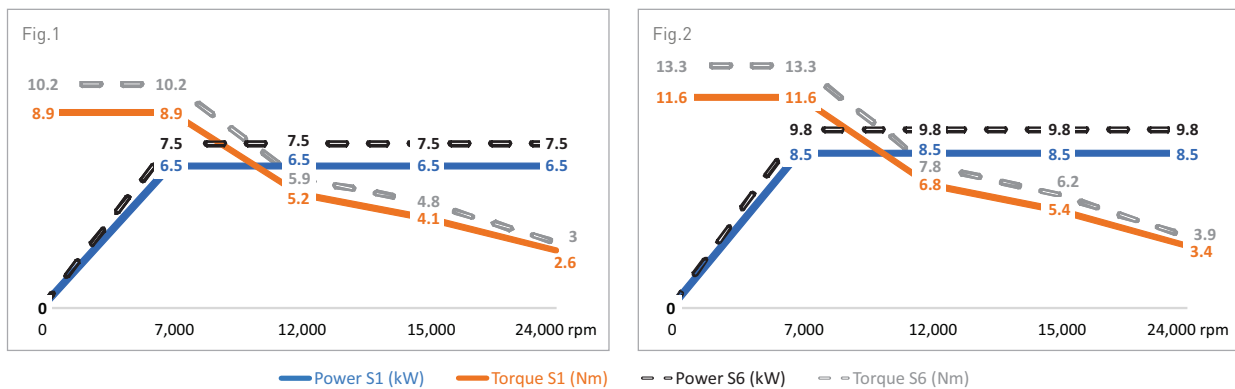
Electrospindle projected for milling and drilling wood, plastic, aluminium and composite materials. Available in many combinations of power and torque to satisfy any customers requirements. Quick and easy maintenance, thanks to a "shaft kit".

Available in ISO30 and HSK F63 configuration, short and long nose. C axis available for all configuration (see details on pag. 20.)

Dimensions



Power and torque



Main characteristics

SAE145 - Heavy duty - automatic tool change air cooling

Main housing type/dimensions	Extruded/mm	145 x 145
Power S1/Rated speed	kW /rpm*1000	6.5/7 fig. 1 8.5/7 fig. 2
Torque S1	Nm	See Chart
Tool taper	-	ISO 30 HSK F63
Nose type	-	short nose - SN long nose - LN
Maximum frequency	Hz	800
Nominal tension	V	220/380
Numbers of poles	N°	4
Maximum speed	rpm	24000
Tool Clamping	-	springs
Tool Unlocking	Pneumatic actuator/bar	3 (min.)
Cylinder return ¹	-	springs
Front Bearings/Max speed	Ceramic	24000
Rear Bearings/Max speed	Steel Ceramic	18000 24000
Bearings lubrication	-	for life
Cooling system	Type/V	Electric fan/24
Electric board 4.0	Standard Protocols available	digital can bus - can open - ethercat - I/O link
Weight	kg	28.0

Options available

Speed monitoring	✓
C axis	✓
C axis with pneumatic service	✓
Aggregate reference sleeve	✓
Encoder 1Vpp	✓
Encoder TTL	✓
Vibration sensor	✓
Bearing temperature sensor	✓
* ✓ available, - not available	

Note

¹ Available, as standard, additional pneumatic service for cylinder air return

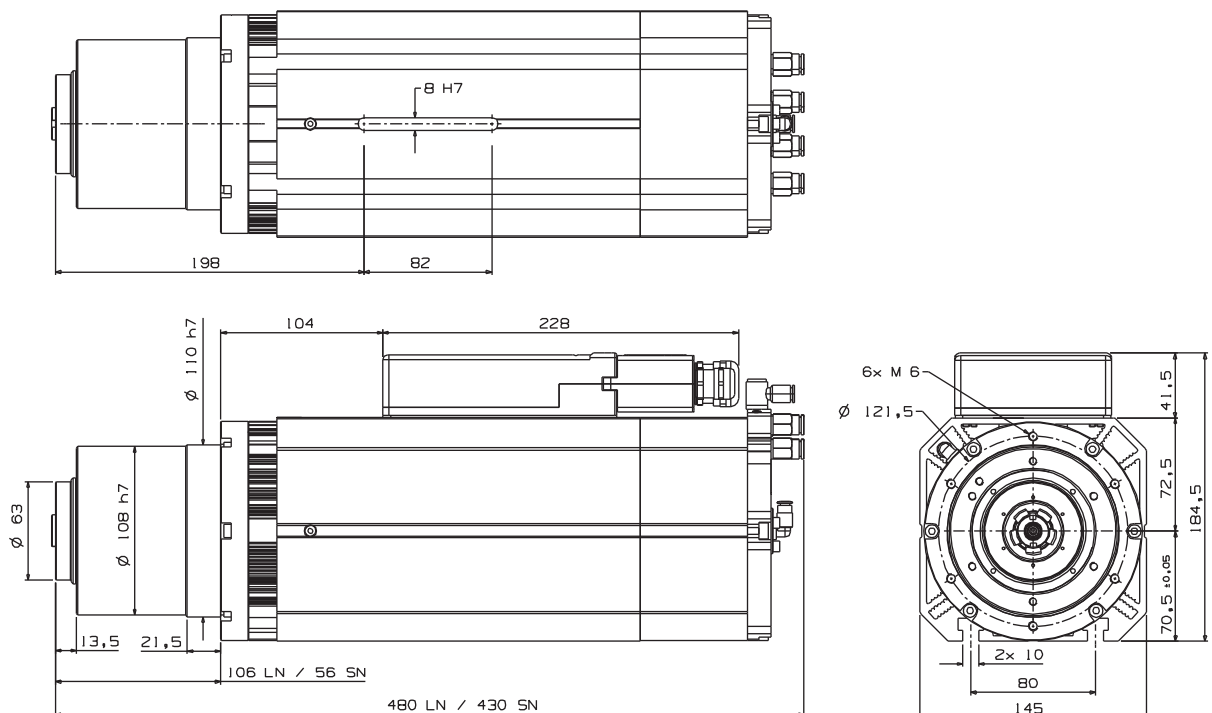


Applications

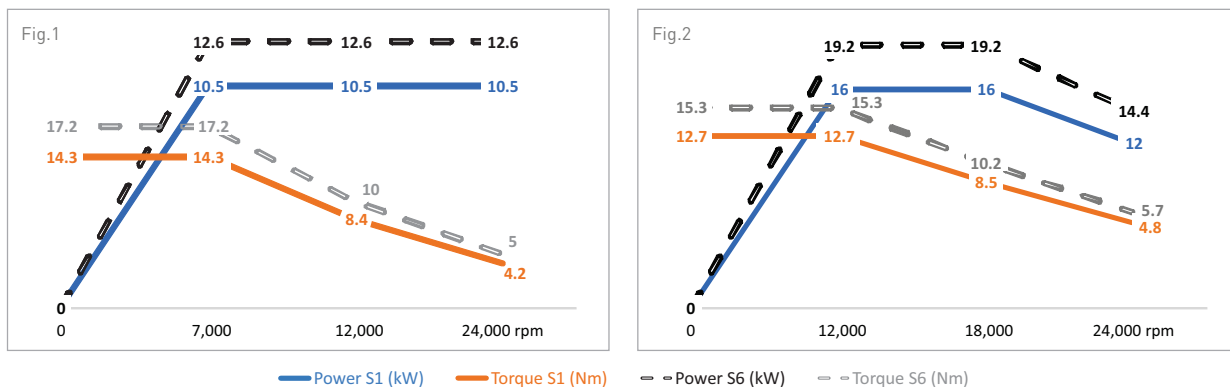
Electrospindle projected for milling and drilling wood, plastic, aluminium and composite materials. Available in many combinations of power and torque to satisfy any customers requirements. Quick and easy maintenance, thanks to a "shaft kit".

Available in ISO30 and HSK F63 configuration, short and long nose. C axis available for all configuration (see details on pag. 20.) High reliability in hard drilling and milling operations thanks to liquid cooling system.

Dimensions



Power and torque

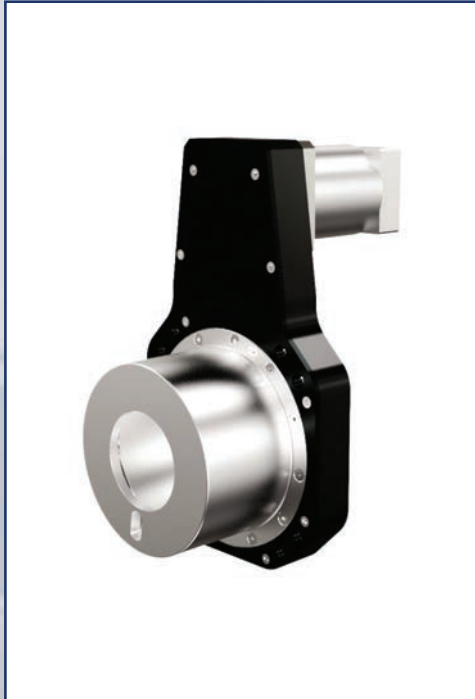


Main characteristics

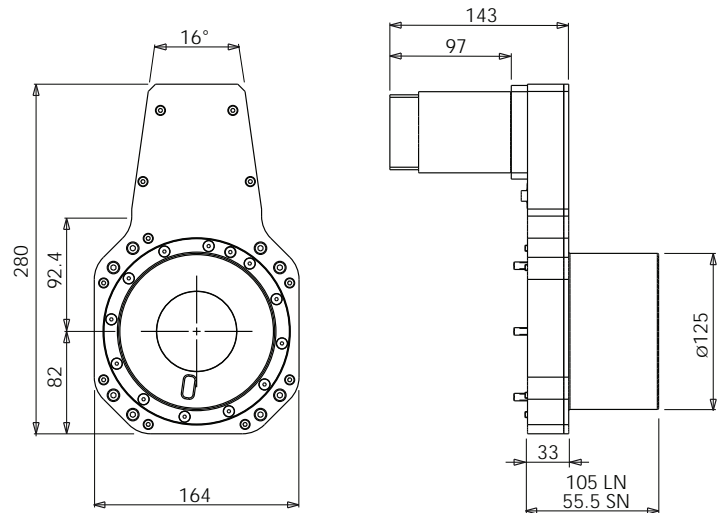
SAE145 - automatic tool change liquid cooling			Options available *	
Main housing type/dimensions	Extruded/mm	145 x 145	Speed monitoring	✓
Power S1/Speed	kW/rpm*1000	10.5/7 fig. 1 16/12 fig. 2	C axis	✓
Torque S1	Nm	see chart	C axis with pneumatic service	✓
Tool taper	-	HSK F63	Aggregate reference sleeve	✓
Nose	-	short nose - SN long nose - LN	Encoder 1Vpp	✓
Maximum frequency	Hz	800	Encoder TTL	✓
Nominal tension	V	220/380	Vibration sensor	✓
Numbers of poles	N°	4	Bearing temperature sensor	✓
Maximum speed	rpm	24000	* ✓ available, - not available	
Tool Clamping	-	springs		
Tool Unlocking	Pneumatic actuator/bar	3 (min.)		
Cylinder return ¹	-	springs		
Front Bearings/Max speed	Ceramic	24000		
Rear Bearings/Max speed	Steel	18000		
	Ceramic	24000		
Bearings lubrication	-	for life		
Cooling system	Type	Liquid		
	Standard	digital		
Electric board 4.0	Protocols available	can bus - can open - ethercat - I/O link		
	Weight	kg	24.5	

Note

¹ Available, as standard, additional pneumatic service for cylinder air return



Dimensions



Main characteristics

C - axes		CSR400	CLR400
Fitting electrospindles	-	SAE145 short nose - SN	SAE145 long nose - LN
Rotation range	Degree °	continuous	
Nominal torque	Nm	80	
Max torque	Nm	120	
Motor power	W	400/800	
Max/Nominal speed	Nm	3000/5000	
Homing position type/N°	-	PNP - NC/1	
Gearbox type	-	planetary gearbox	
Reduction ratio	-	1 / 82	
Lubrication	grease	for life	
Additional service/type/N°	Pneumatic	-	3 max
Accuracy	arc/min	0.01	
Weight	kg	8.0	



BLOCK COMPACT TYPE

Main features

- FEM designed high resistance aluminium frame completely manufactured by advanced CNC machines.
- Hard anodizing housing.
- Liquid cooled.
- Low air pressure required for automatic tool change system (Minimum pressure 3 bar).
- The small dimensions and the special shape make it interesting for applications with reduced space, especially on milling heads with tilting axis at 50 °.
- Available with encoder 1VPP or TTL type.

Technical data

- Rotational speed up to 24,000 rpm.
- Available with Synchronous and Asynchronous motor
- For both type 4 and 6 poles.
- Front and rear «ceramic bearings» with seals on both sides.
- Grease lubrication for life.

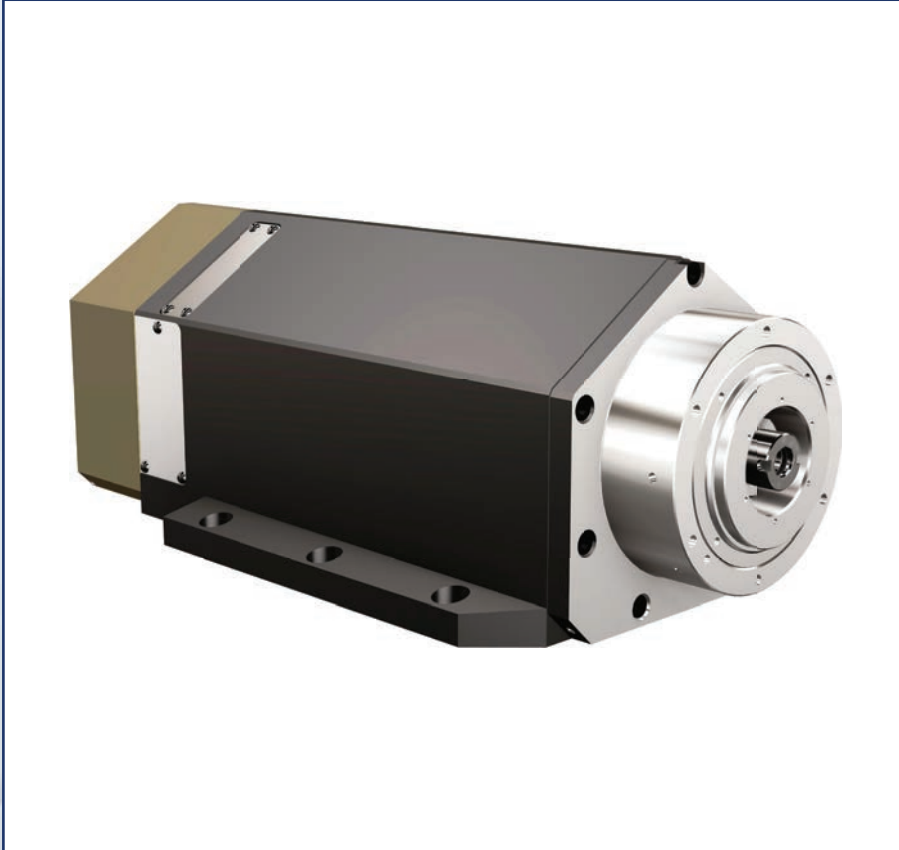
BLOCK SQUARE TYPE

Main features

- FEM designed high resistance aluminium frame completely manufactured by advanced CNC machines.
- Hard anodizing housing.
- Liquid cooled.
- Low air pressure required for automatic tool change system (Minimum pressure 3 bar)
- Available with encoder 1VPP or TTL type.

Technical data

- Rotational speed up to 24,000 rpm.
- Available with Synchronous and Asynchronous motor
- For both type 4 poles.
- Front and rear «ceramic bearings» with seals on both sides.
- Grease lubrication for life.



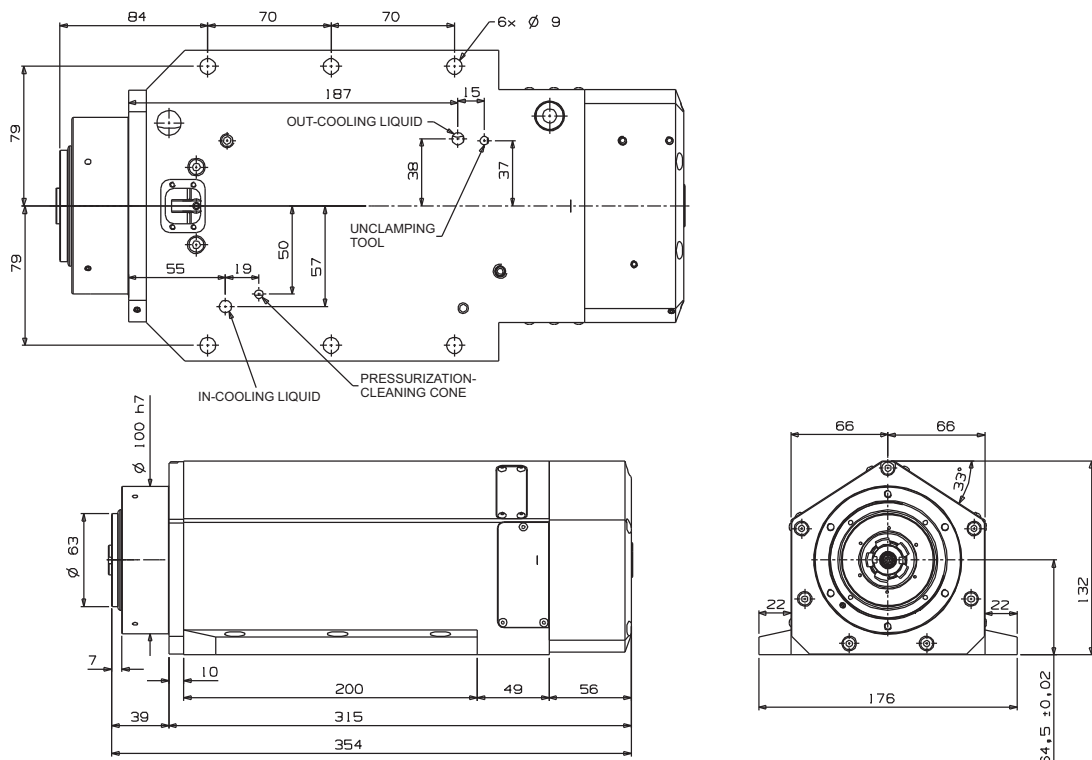
Applications

Electrospindle specifically projected for 2 axis milling heads with 50-degree axis. This version combines high performances in a very small housing.

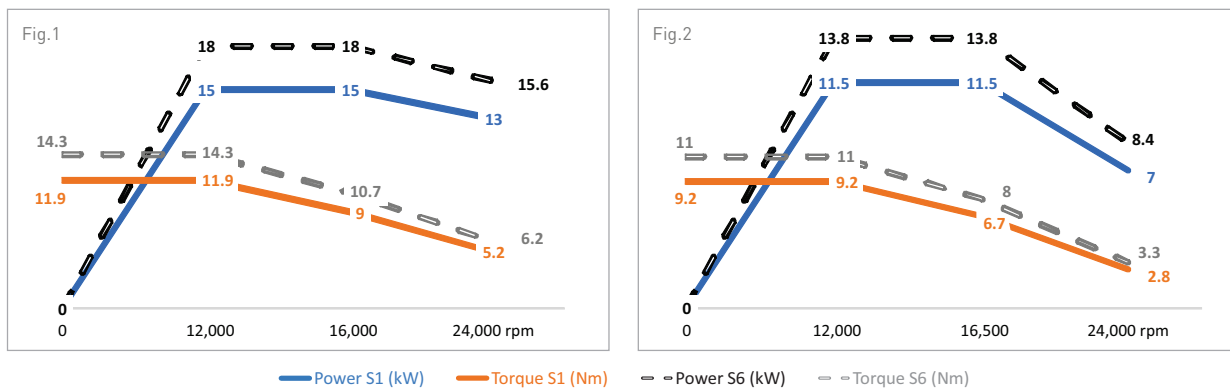
Available Asynchronous and Synchronous versions, both with 4 or 6 poles, to satisfy any customers requirements.

High reliability in hard milling thanks to liquid cooled system.

Dimensions



Power and torque

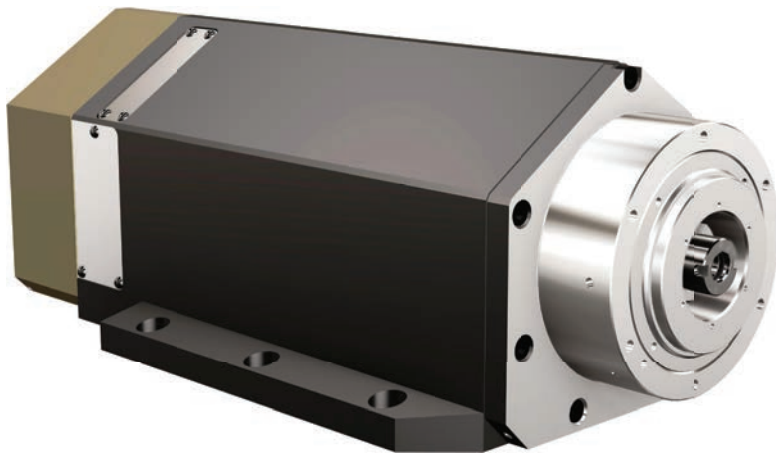


Main characteristics

SAB132 - automatic tool change Asynchronous			Options available *	
Main housing type / dimensions	Solid / mm	176 x 132	Speed monitoring	✓
Power S1/Rated speed/N°Poles	kW /rpm*1000	15.0 / 12 / 6 fig. 1	Aggregate reference sleeve	✓
		11.5 / 12 / 4 fig. 2	Encoder 1Vpp	✓
Torque S1	Nm	See Chart	Encoder TTL	✓
Tool taper	-	HSK F63	Vibration sensor	-
Nose type	-	short nose - SN	Bearing temperature sensor	-
Maximum frequency	Hz	1200 / 800	* ✓ available, - not available	
Nominal tension	V	380		
Numbers of poles	N°	6 / 4		
Maximum speed	rpm	24000		
Tool Clamping	-	springs		
Tool Unlocking	Pneumatic actuator / bar	3 (min.)		
Cylinder return ¹	-	springs		
Front Bearings type	Ceramic	24000		
	Steel	18000		
Rear Bearings type	Ceramic	24000		
Bearings lubrication	Grease	for life		
Cooling system	Type	Liquid		
Electric board 4.0	Standard	digital		
	Protocols available	-		
Weight	kg	26		

Note	
1	Available, as standard, additional pneumatic service for cylinder air return

Synchronous



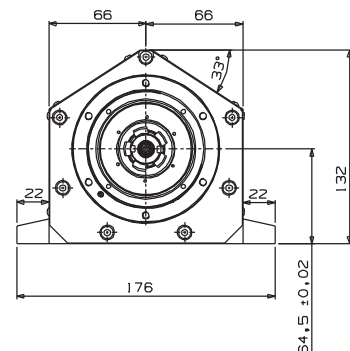
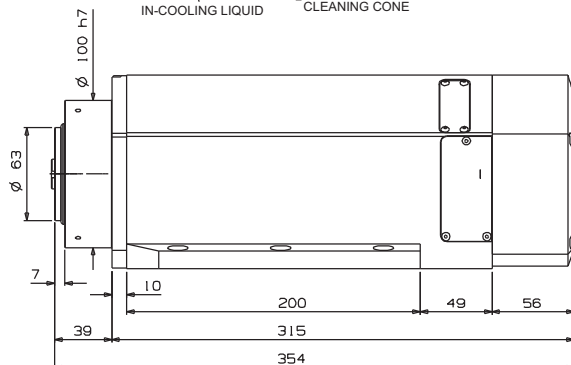
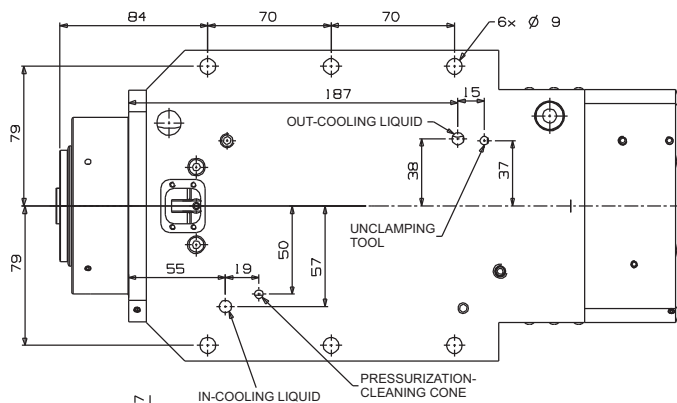
Applications

Electrospindle specifically projected for 2 axis milling heads with 50-degree axis. This version combines high performances in a very small housing.

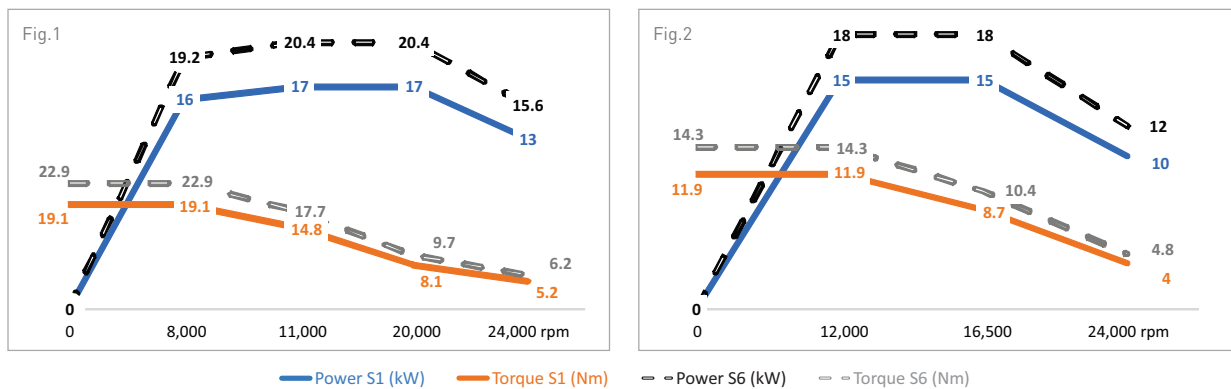
Available Asynchronous and Synchronous versions, both with 4 or 6 poles, to satisfy any customers requirements.

High reliability in hard milling thanks to liquid cooled system.

Dimensions



Power and torque

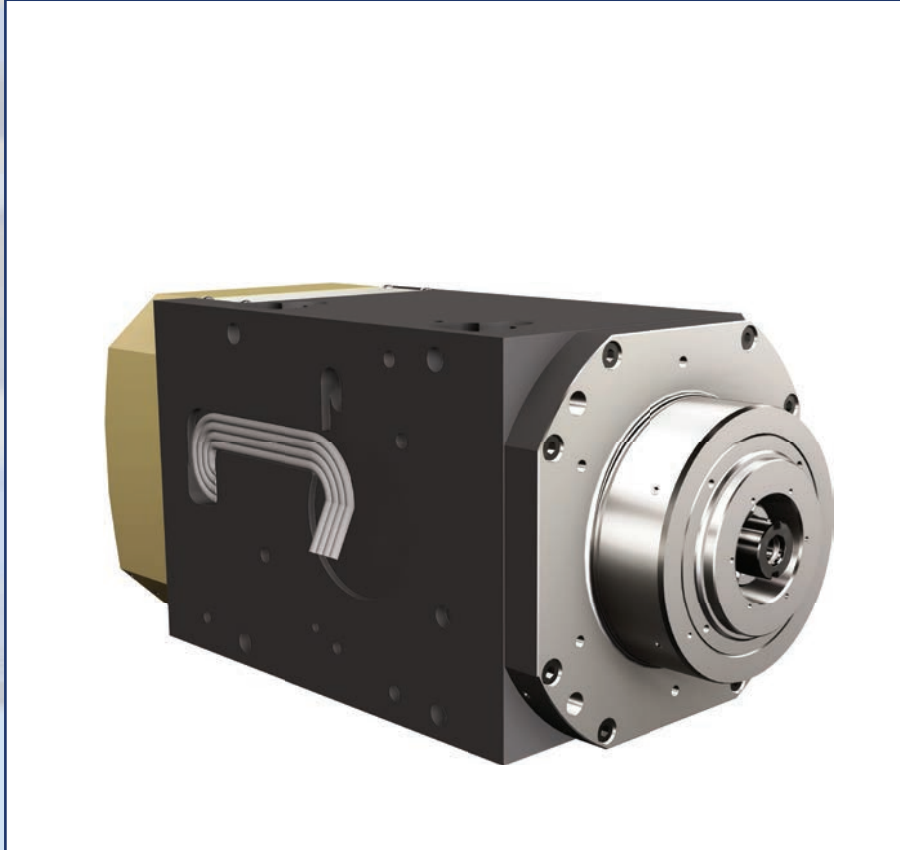


Main characteristics

SAB132 - automatic tool change Synchronous		
Main housing type / dimensions	Solid / mm	176 x 132
Power S1/Rated speed/N°Poles	kW /rpm*1000	16.0 / 8 / 6 fig. 1
		15.0 / 12 / 4 fig. 2
Torque S1	Nm	See Chart
Tool taper	-	HSK F63
Nose type	-	short nose - SN
Maximum frequency	Hz	1200 / 800
Nominal tension	V	380
Numbers of poles	N°	6 / 4
Maximum speed	rpm	24000
Tool Clamping	-	springs
Tool Unlocking	Pneumatic actuator / bar	3 (min.)
Cylinder return ¹	-	springs
Front Bearings type	Ceramic	24000
	Steel	18000
Rear Bearings type	Ceramic	24000
	Grease	for life
Bearings lubrication	Type	Liquid
Cooling system	Standard	digital
	Protocols available	-
Electric board 4.0	kg	26

Options available	*
Speed monitoring	✓
Aggregate reference sleeve	✓
Encoder 1Vpp	✓
Encoder TTL	✓
Vibration sensor	-
Bearing temperature sensor	-
* ✓ available, - not available	

Note	
1	Available, as standard, additional pneumatic service for cylinder air return



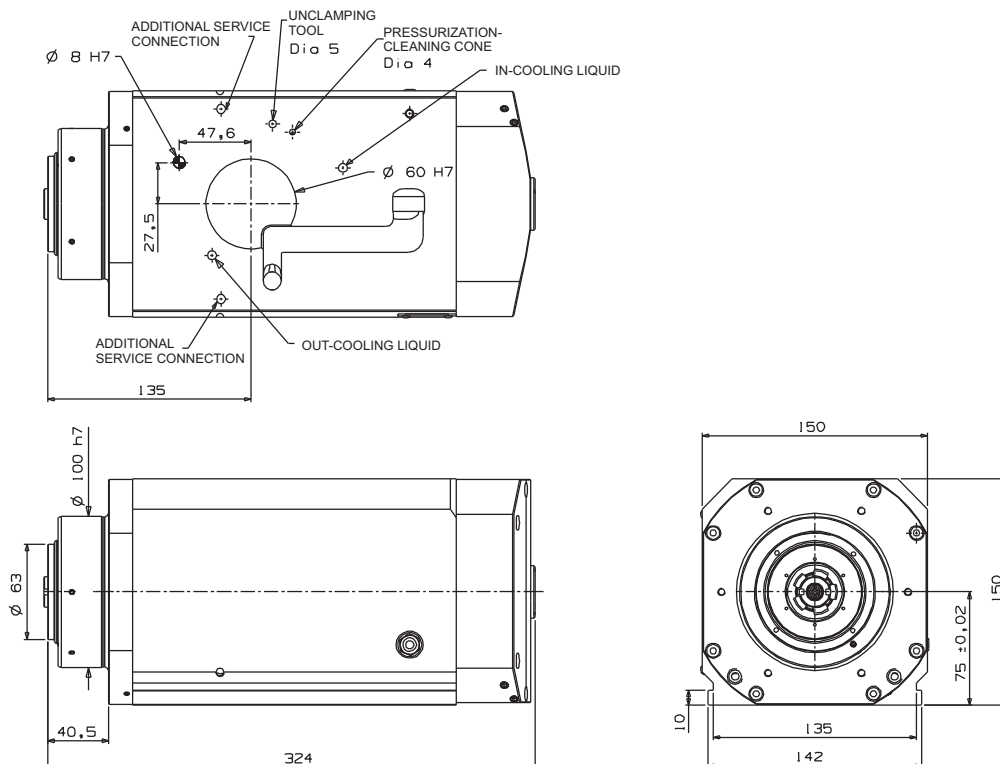
Applications

Electrospindle specifically projected for 2 axis milling heads with 90-degree axis. This version combines high performances in a very small housing.

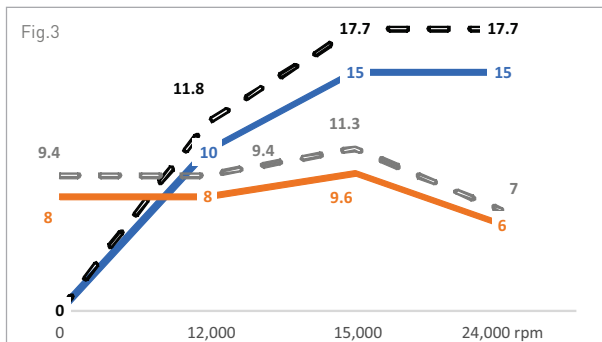
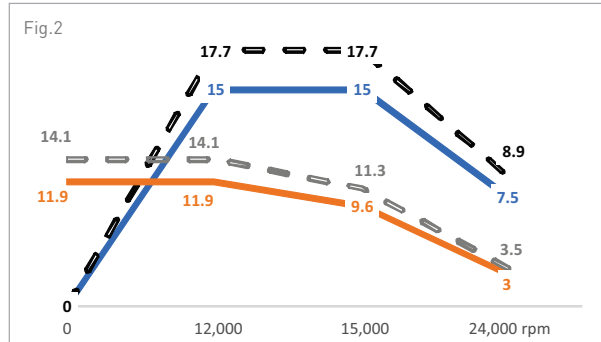
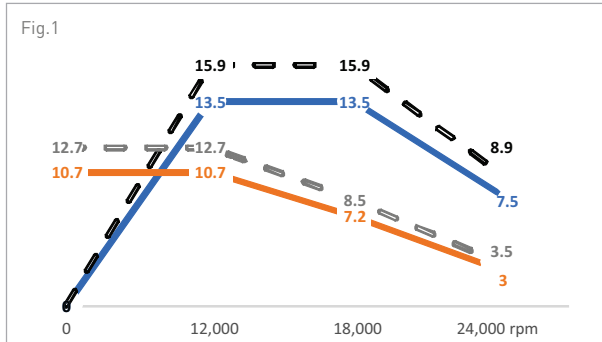
Available short and long nose, asynchronous and synchronous versions, to satisfy any customers requirements.

High reliability in hard milling thanks to liquid cooled system.

Dimensions



Power and torque



— Power S1 (kW) — Torque S1 (Nm) - - Power S6 (kW) - - Torque S6 (Nm)

Main characteristics

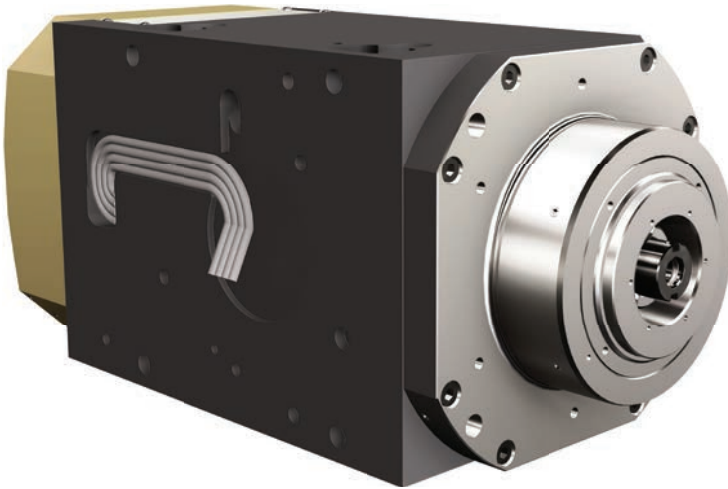
SAB150 - automatic tool change Asynchronous Short nose Heavy duty		
Main housing type / dimensions	Solid / mm	150 x 150
Power S1/Rated speed	kW /rpm*1000	13.5 / 12 fig. 1
		15.0 / 12 fig. 2
		15.0 / 15 fig. 3
Torque S1	Nm	See Chart
Tool taper	-	HSK F63
Nose type	-	short nose - SN
Maximum frequency	Hz	800
Nominal tension	V	380
Numbers of poles	N°	4
Maximum speed	rpm	24000
Tool Clamping	-	springs
Tool Unlocking	Pneumatic actuator / bar	3 (min.)
Cylinder return 1	-	springs
Front Bearings type	Ceramic	24000
Rear Bearings type	Steel	18000
	Ceramic	24000
Bearings lubrication	Grease	for life
Cooling system	Type	Liquid
	Standard	digital
Electric board 4.0	Protocols available	-
	Weight	kg

Options available	*
Speed monitoring	✓
Side box connectors	✓
Plug and play connectors	✓
Aggregate reference sleeve	✓
Encoder 1Vpp	✓
Encoder TTL	✓
Vibration sensor	-
Bearing temperature sensor	-

* ✓ available, - not available

Note
 1 Available, as standard, additional pneumatic service for cylinder air return

Heavy duty



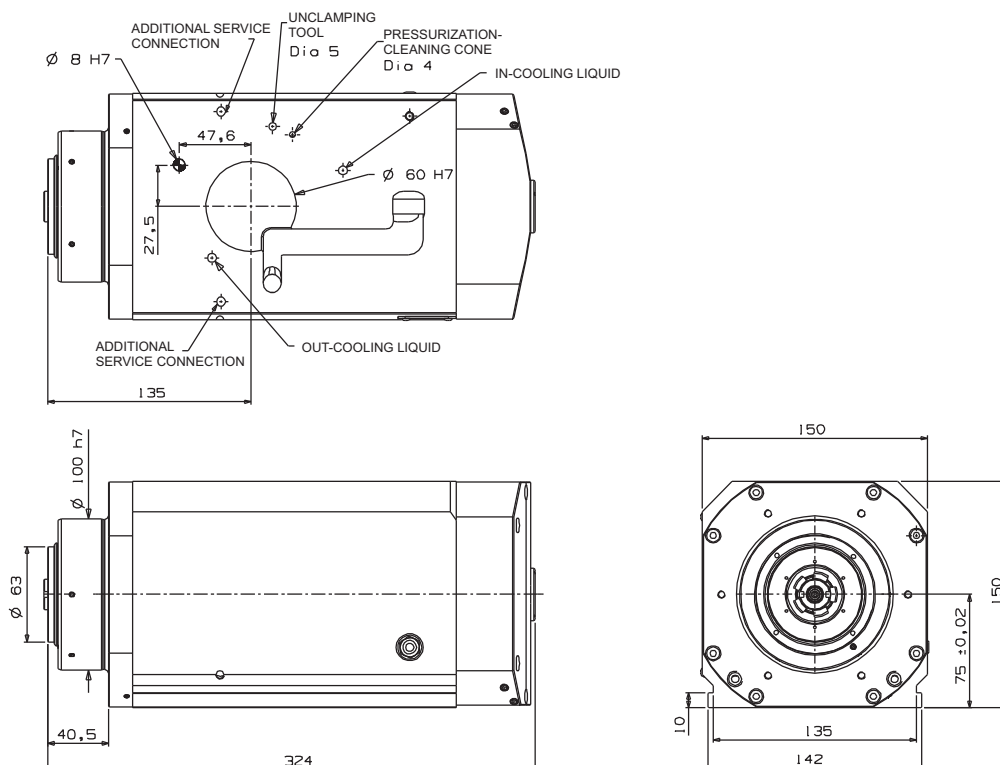
Applications

Electrospindle specifically projected for 2 axis milling heads with 90-degree axis. This version combines high performances in a very small housing.

Available short and long nose, asynchronous and synchronous versions, to satisfy any customers requirements.

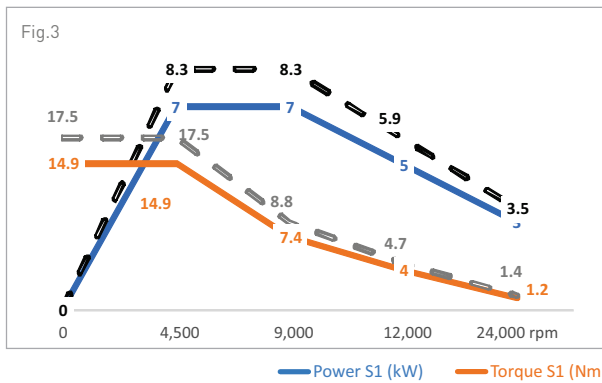
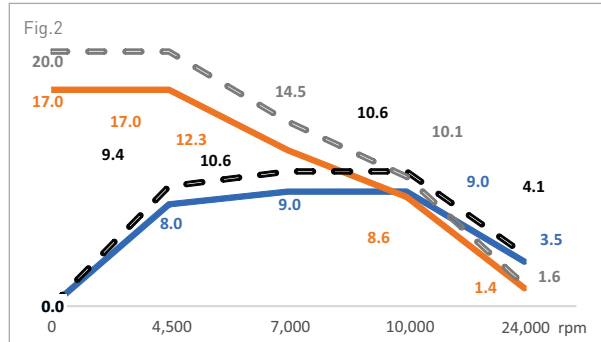
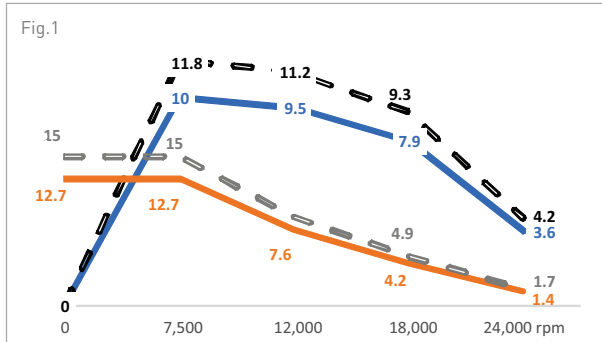
High reliability in hard milling thanks to liquid cooled system.

Dimensions



SAB150/Asynchronous/Short nose/Heavy duty

Power and torque



— Power S1 (kW) — Torque S1 (Nm) - - Power S6 (kW) - - Torque S6 (Nm)

Main characteristics

SAB150 - automatic tool change Asynchronous Short nose Heavy duty

Main housing type / dimensions	Solid / mm	150 x 150
Power S1/Rated speed	kW /rpm*1000	10.0 / 7.5 fig. 1
		8.0 / 4.5 fig. 2
		7.0 / 4.5 fig. 3
Torque S1	Nm	See Chart
Tool taper	-	HSK F63
Nose type	-	short nose - SN
Maximum frequency	Hz	800
Nominal tension	V	380
Numbers of poles	N°	4
Maximum speed	rpm	24000
Tool Clamping	-	springs
Tool Unlocking	Pneumatic actuator / bar	3 (min.)
Cylinder return 1	-	springs
Front Bearings type	Ceramic	24000
Rear Bearings type	Steel	18000
	Ceramic	24000
Bearings lubrication	Grease	for life
Cooling system	Type	Liquid
		Standard
Electric board 4.0	Protocols available	-
Weight	kg	24.0

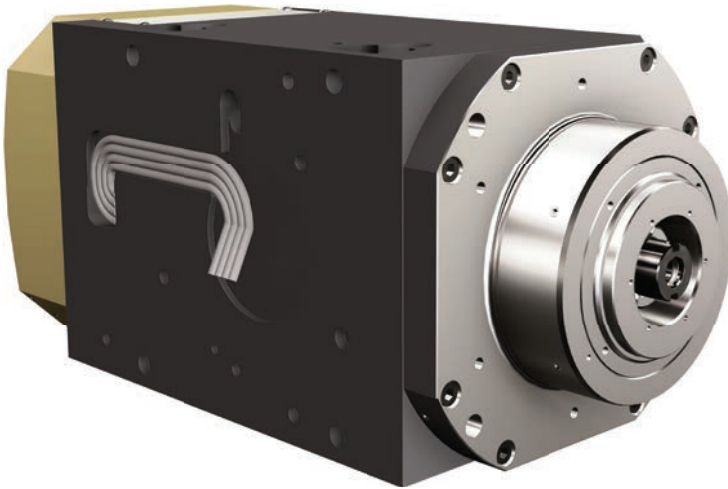
Options available

Speed monitoring	✓
Side box connectors	✓
Plug and play connectors	✓
Aggregate reference sleeve	✓
Encoder 1Vpp	✓
Encoder TTL	✓
Vibration sensor	-
Bearing temperature sensor	-
* ✓ available, - not available	

Note

¹ Available, as standard, additional pneumatic service for cylinder air return

Synchronous



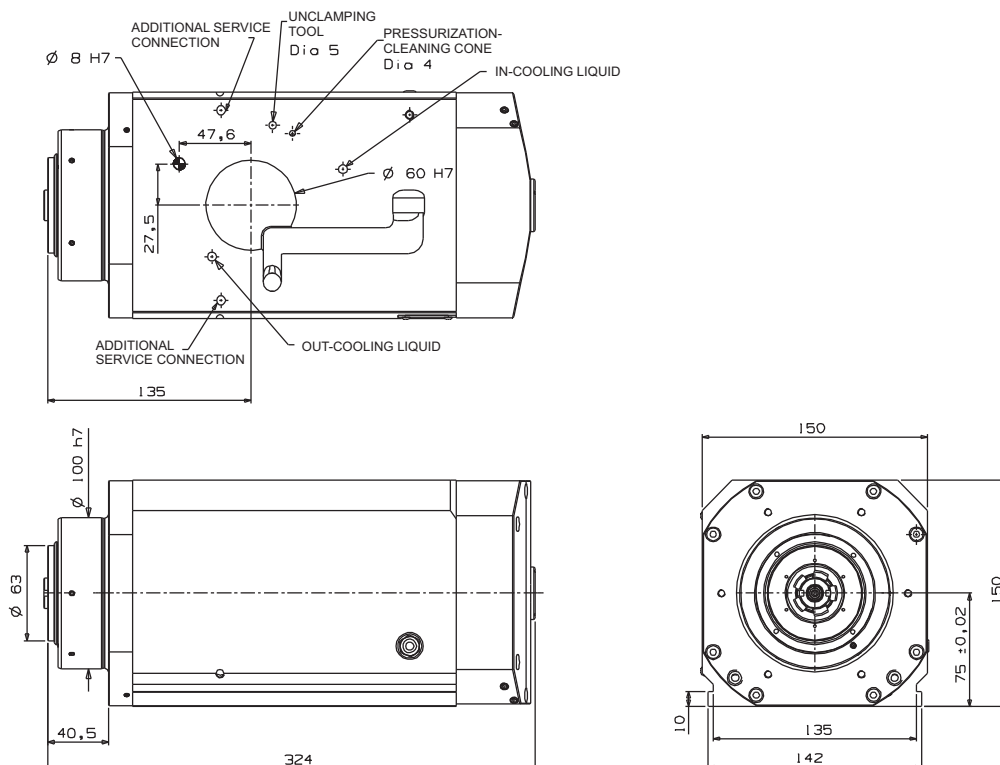
Applications

Electrospindle specifically projected for 2 axis milling heads with 90-degree axis. This version combines high performances in a very small housing.

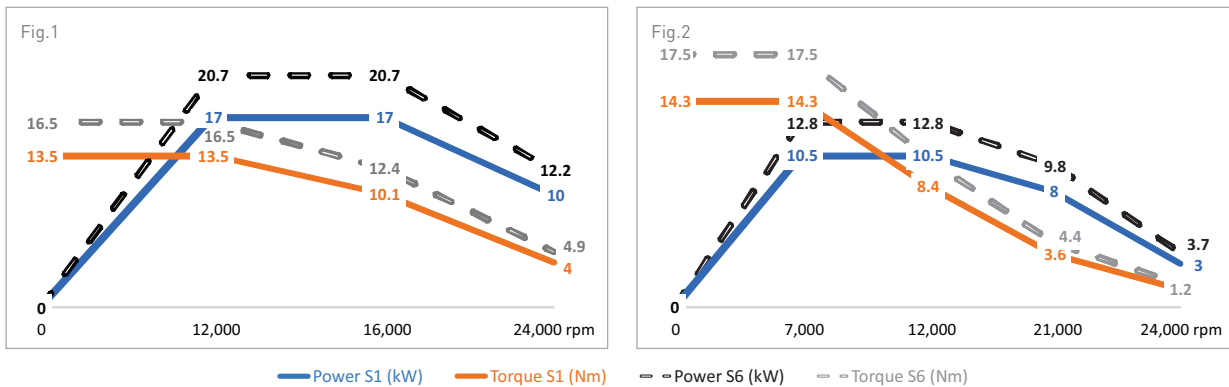
Available short and long nose, asynchronous and synchronous versions, to satisfy any customers requirements.

High reliability in hard milling thanks to liquid cooled system.

Dimensions



Power and torque

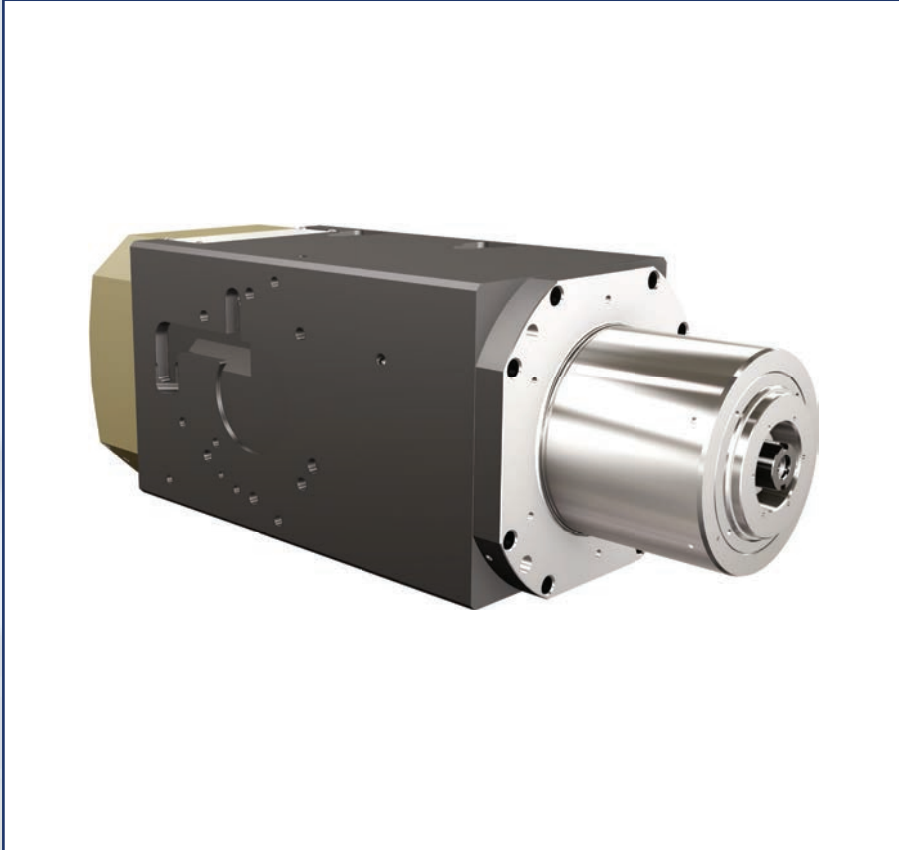


Main characteristics

SAB150 - automatic tool change Synchronous Short nose		
Main housing type / dimensions	Extruded / mm	150 x 150
Power S1/Rated speed	kW /rpm*1000	17.0 / 12 fig. 1
		10.5 / 7 fig. 2
Torque S1	Nm	See Chart
Tool taper	-	HSK F63
Nose type	-	short nose - SN
Maximum frequency	Hz	800
Nominal tension	V	380
Numbers of poles	N°	4
Maximum speed	rpm	24000
Tool Clamping	-	springs
Tool Unlocking	Pneumatic actuator / bar	3 (min.)
Cylinder return ¹	-	springs
Front Bearings type	Ceramic	24000
	Steel	18000
Rear Bearings type	Ceramic	24000
	Grease	for life
Bearings lubrication	Type	Liquid
Cooling system	Standard	digital
	Protocols available	-
Electric board 4.0	kg	24.0

Options available	*
Speed monitoring	✓
Side box connectors	✓
Plug and play connectors	✓
Aggregate reference sleeve	✓
Encoder 1Vpp	✓
Encoder TTL	✓
Vibration sensor	-
Bearing temperature sensor	-
* ✓ available, - not available	

Note	
¹	Available, as standard, additional pneumatic service for cylinder air return



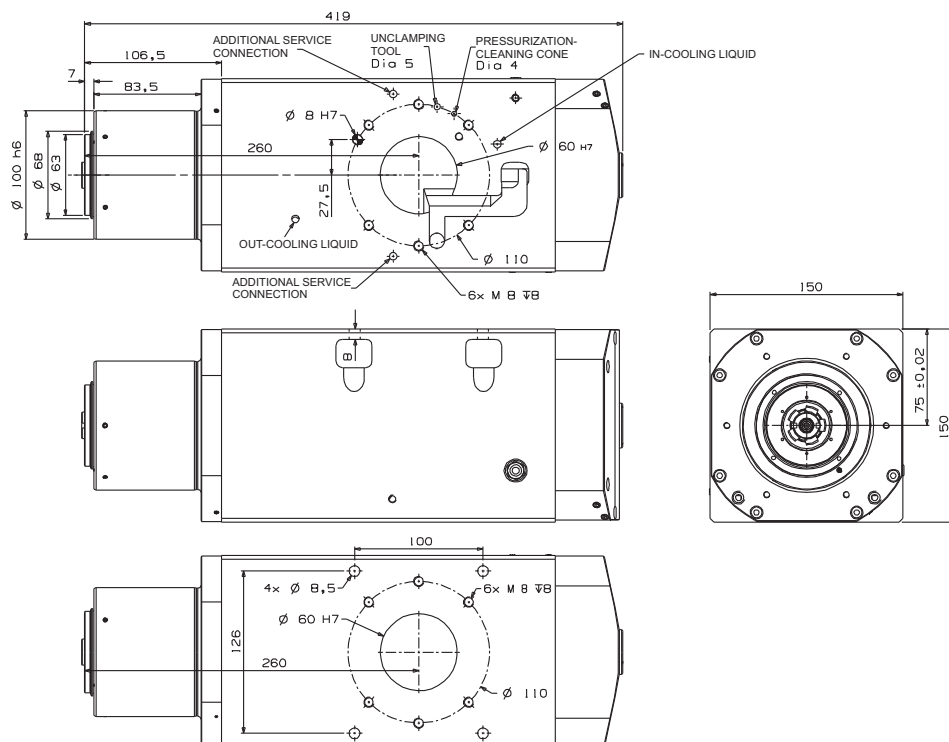
Applications

Electrospindle specifically projected for 2 axis milling heads with 90-degree axis. This version combines high performances in a very small housing.

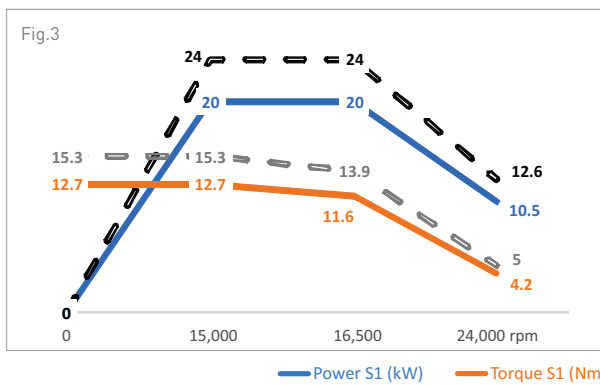
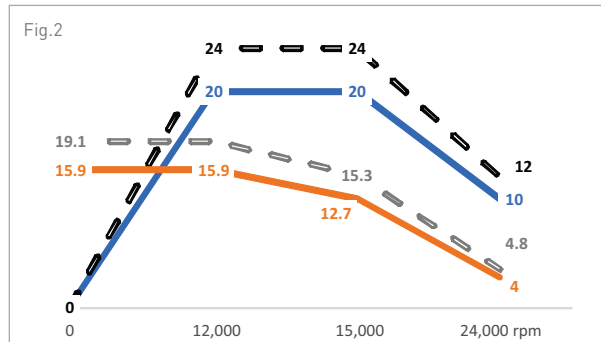
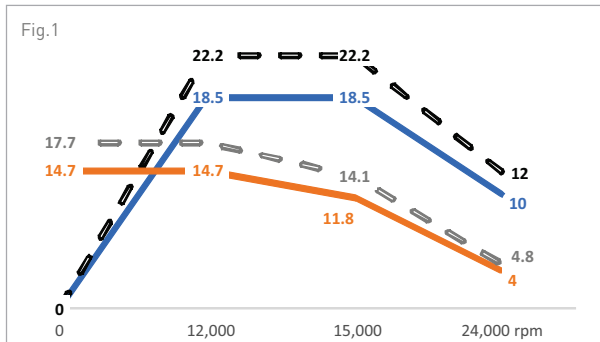
Available short and long nose, asynchronous and synchronous versions, to satisfy any customers requirements.

High reliability in hard milling thanks to liquid cooled system.

Dimensions



Power and torque



Main characteristics

SAB150 - automatic tool change Asynchronous Long nose

Main housing type / dimensions	Extruded / mm	150 x 150
Power S1/Rated speed	kW /rpm*1000	18.5 / 12 fig. 1
		20.0 / 12 fig. 2
		20.0 / 15 fig. 3
Torque S1	Nm	See Chart
Tool taper	-	HSK F63
Nose type	-	long nose - LN
Maximum frequency	Hz	800
Nominal tension	V	380
Numbers of poles	N°	4
Maximum speed	rpm	24000
Tool Clamping	-	springs
Tool Unlocking	Pneumatic actuator / bar	3 (min.)
Cylinder return ¹	-	springs
Front Bearings type	Ceramic	24000
Rear Bearings type	Steel	18000
	Ceramic	24000
Bearings lubrication	Grease	for life
Cooling system	Type	Liquid
		Standard
Electric board 4.0	Protocols available	-
Weight	kg	25.3

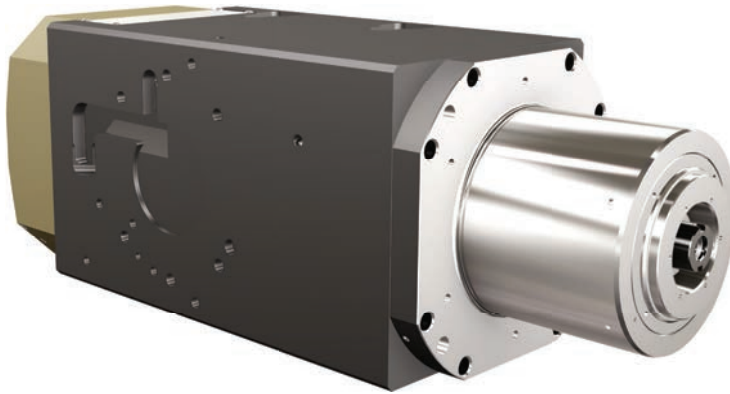
Options available

Options available	*
Speed monitoring	✓
Side box connectors	✓
Plug and play connectors	✓
Aggregate reference sleeve	✓
Encoder 1Vpp	✓
Encoder TTL	✓
Vibration sensor	-
Bearing temperature sensor	-
* ✓ available, - not available	

Note

¹ Available, as standard, additional pneumatic service for cylinder air return

Heavy duty



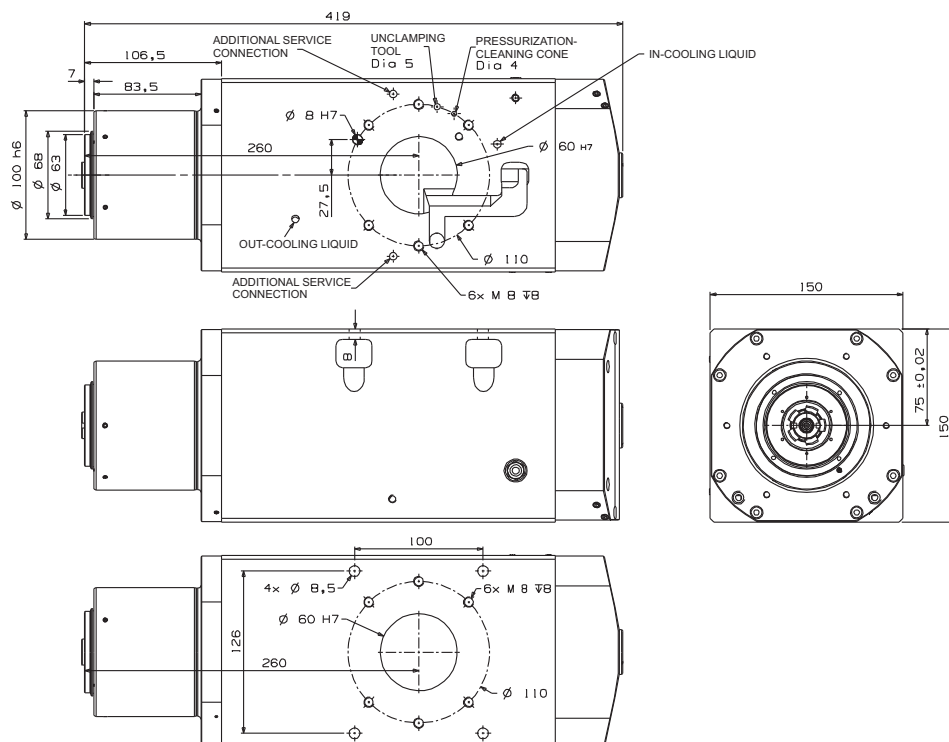
Applications

Electrospindle specifically projected for 2 axis milling heads with 90-degree axis. This version combines high performances in a very small housing.

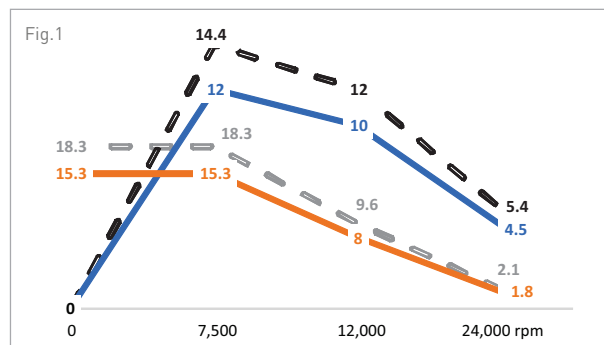
Available short and long nose, asynchronous and synchronous versions, to satisfy any customers requirements.

High reliability in hard milling thanks to liquid cooled system.

Dimensions



Power and torque



— Power S1 (kW) — Torque S1 (Nm) - - Power S6 (kW) - - Torque S6 (Nm)

Main characteristics

SAB150 - automatic tool change Asynchronous Heavy duty
Long nose

Main housing type / dimensions	Extruded / mm	150 x 150
Power S1/Rated speed	kW /rpm*1000	12.0 / 7.5
Torque S1	Nm	See Chart
Tool taper	-	HSK F63
Nose type	-	long nose - LN
Maximum frequency	Hz	800
Nominal tension	V	380
Numbers of poles	N°	4
Maximum speed	rpm	24000
Tool Clamping	-	springs
Tool Unlocking	Pneumatic actuator / bar	3 (min.)
Cylinder return ¹	-	springs
Front Bearings type	Ceramic	24000
Rear Bearings type	Steel	18000
	Ceramic	24000
Bearings lubrication	Grease	for life
Cooling system	Type	Liquid
Electric board 4.0	Standard	digital
	Protocols available	-
Weight	kg	25.3

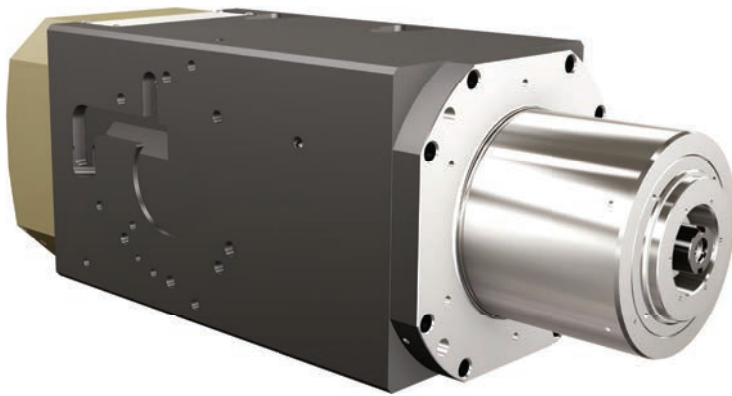
Options available

Speed monitoring	√
Side box connectors	√
Plug and play connectors	√
Aggregate reference sleeve	√
Encoder 1Vpp	√
Encoder TTL	√
Vibration sensor	-
Bearing temperature sensor	-
* √ available, - not available	

Note

¹ Available, as standard, additional pneumatic service for cylinder air return

Synchronous



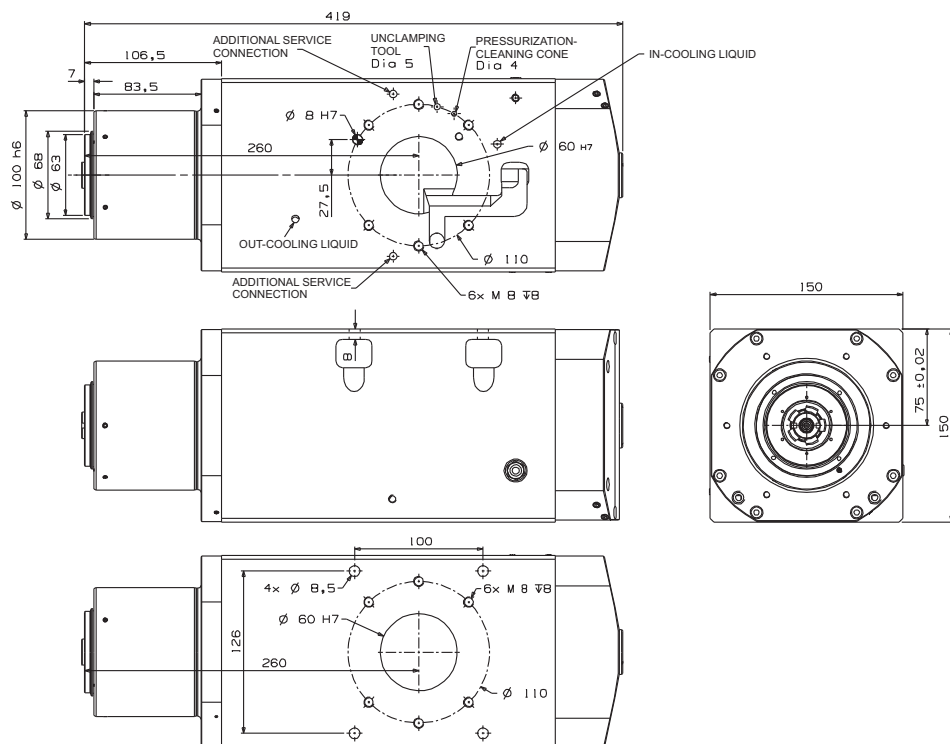
Applications

Electrospindle specifically projected for 2 axis milling heads with 90-degree axis. This version combines high performances in a very small housing.

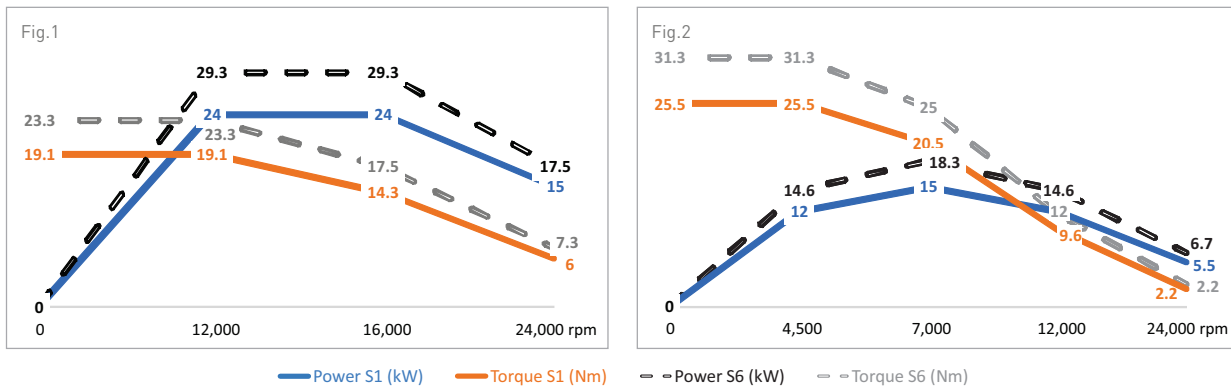
Available short and long nose, asynchronous and synchronous versions, to satisfy any customers requirements.

High reliability in hard milling thanks to liquid cooled system.

Dimensions



Power and torque



Main characteristics

SAB150 - automatic tool change Synchronous Long nose		
Main housing type / dimensions	Extruded / mm	150 x 150
Power S1/Rated speed	kW /rpm*1000	24.0 / 12 fig. 1
		15.0 / 7 fig. 2
Torque S1	Nm	See Chart
Tool taper	-	HSK F63
Nose type	-	long nose - LN
Maximum frequency	Hz	800
Nominal tension	V	380
Numbers of poles	N°	4
Maximum speed	rpm	24000
Tool Clamping	-	springs
Tool Unlocking	Pneumatic actuator / bar	3 (min.)
Cylinder return ¹	-	springs
Front Bearings type	Ceramic	24000
	Steel	18000
Rear Bearings type	Ceramic	24000
	Grease	for life
Bearings lubrication	Type	Liquid
Cooling system	Standard	digital
	Protocols available	-
Electric board 4.0	-	-
Weight	kg	25.3

Options available	*
Speed monitoring	√
Side box connectors	√
Plug and play connectors	√
Aggregate reference sleeve	√
Encoder 1Vpp	√
Encoder TTL	√
Vibration sensor	-
Bearing temperature sensor	-
* √ available, - not available	

Note	
1	Available, as standard, additional pneumatic service for cylinder air return

Contact

OLIspeed s.r.l.

Legal headquarters: Strada degli Schiocchi 12 - 41124 Modena ITALY
 Administration headquarters: Via Canalazzo, 35 - 41036 Medolla (MO) - ITALY
 Operational headquarter: Largo Filippo Neri 6/P - 06034 Foligno (PG) ITALY
 Tel +39.0535.410611 - Fax +39.0535.410650
 sales@olispeed.com
 www.olispeed.com

Designed and manufactured in Italy for the global market

WOLONG
Power your future

Asia

Zhejiang Wolong International Business Co., Ltd
 No.1801, Renmin West Road
 Shangyu, Zhejiang, China
 T +86 575 821 76722
 F +86 575 821 76599
 international@wolong.com
 www.wolong-electric.com

Europe

Wolong EMEA (Germany) GmbH
 Schwalmstraße 289
 41238 Mönchengladbach, Germany
 T +49 7182 14-1
 F +49 7182 14-590
 info-de@atb.wolong.com
 www.wolong-electric.com

Americas

Wolong Americas LLC
 3050 Post Oak Boulevard, suite 630
 Houston, Texas 77056, USA
 T +1 (346) 616-0102
 F +1 (855) 511-6620
 rfq.americas@wolong.com
 www.wolong-electric.com

WOLONG FAMILY OF BRANDS



**BROOK
CROMPTON**



GE INDUSTRIAL MOTORS

**LAURENCE
SCOTT**

MORLEY



SCHORCH

